

我们为客户持续供应可靠的零配件 同时也致力于为用户提供一流的售后服务

We continue to provide customers with reliable spare parts, we also committed to providing first-class after-sales service.

- 我们的售后服务团队和代理商保持长期稳定的紧密合作, 打造志高掘进全球服务支持体系, 保障客户在产能持续增长的同时, 降低维修及保养成本。
- Our after-sales service team and agents maintain long-term and stable close cooperation, creating a global service support system for Zhigao Tunnelling, ensuring that customers can continuously increase production capacity while reducing repair and maintenance costs.

备件手册 SPARE PARTS MANUAL

- 所有产品均提供符合国际要求和客户定制需求的备件手册, 以及不同阶段的保养维护清单, 以确保用户采购的设备稳定运行。
- All products are supplied with spare parts manuals that meet international standards and are tailored to customers, as well as maintenance kits at different stages to ensure the smooth and reliable operation of the equipment.

正品零件 GENUINE PARTS

- 志高公司客户应使用正宗厂家配件和各种油品以确保机器寿命和使用性能, 并保证机器长期平稳运转;
- Customers should always use authentic or factory approved parts and oils to ensure the life and performance, and the long lasting smooth running of the machine;



钻车服务工作站 SERVICE STATION

- 我们可为用户提供钻车服务工作站, 该服务站运输便捷、配套完善, 让用户享受“矿山及工程设备维护维修、应急配件储备”等一站式服务。
- We can provide users with mobile service workstations, which are convenient in transportation and complete in supporting facilities, allowing users to enjoy one-stop services such as "maintenance and repair of mining and construction equipment, emergency parts reserve".



浙江志高机械股份有限公司保留最终解释权。

Zhejiang Zhigao Machinery Co.,Ltd. reserves the right of final interpretation.

2024.10.23

浙江志高机械股份有限公司

地址: 浙江省衢州市衢江区百灵北路15号
国内销售热线: 0570-8089522 / 3375599 / 3375666
海外销售热线: 0570-3688903 / 3379118
传真: 0570-3375621
邮箱: zgjx@zhigaojx.com
网址: www.zhigaojx.com

Zhejiang Zhigao Machinery Co.,Ltd.

Add: No.15 North Bailing Avenue, Qujiang District, Quzhou City, Zhejiang Province, China
Domestic Sales Hotline: +86-570-8089522 / 3375599 / 3375666
Overseas Sales Hotline: +86-570-3688903 / 3379118
Fax: +86-570-3375621
E-mail: zgjx@zhigaojx.com
Http: www.zhigaojx.com



ZEGA

中国
智造

ZEGA工业螺杆式空气压缩机

ZEGA industrial screw air compressor



2003年8月成立 Established in August 2003:

- 2009年至今被评为国家高新技术企业 Rated as a national high-tech enterprise since 2009
- 2024年被评“中国工程机械专业制造商”第17名 Rated as No. 17 in “China Top Professional Manufacturers of Construction Machinery” in 2024
- 国家标准制定单位 Member of the National Standard maker
- 中国通用机械压缩机协会理事和标委会成员单位 Member of China General Machinery-Compressor Association and Standard Committee
- 占地482亩, 建筑面积20.1万m² With 79 acre land and building area of 201,000 square meters

科技动力无限 志高节能先锋
Infinite Technological Innovation, achieving Zhigao Efficiency Pioneer



■ 浙江志高机械股份有限公司是一家从事系列空气压缩机和凿岩设备的研究开发、生产销售和应用服务的专业厂家。产品广泛应用于工业气源、各类矿山开采和工程项目建设。企业以技术开发为核心，秉承“重细节、求高效、铸品质、创未来”的行动纲领，以“科技创新无限，志高掘进先锋”为经营理念。放眼全球，用争创世界一流的信心为客户提供产品和服务，为推动行业技术进步和节能环保事业而努力前行！

■ Zhejiang Zhigao Machinery Co., Ltd. is a professional manufacturer engaged in the research and development, production, marketing and application services of full range of air compressors and rock drilling equipment. Products are widely used in industrial compressed air sources, various types of mining and civil engineering construction. With technological innovation as the core, Zhigao establishes its guiding principle of "emphasizing details, seeking efficiency, based on quality, and striving for the brighter future", and adheres to business philosophy of "continuous improvement and pursuit of perfection". Zhigao is serving the global market with world-class products to create value for customers and work hard to promote industry technological progress, energy conservation and environmental protection.

志存高远, 持之以恒!
Aim high and persevere!

21年累计 Accumulated over 21 years

Sales of drilling rigs (in units)
销售凿岩钻机
26,500
台

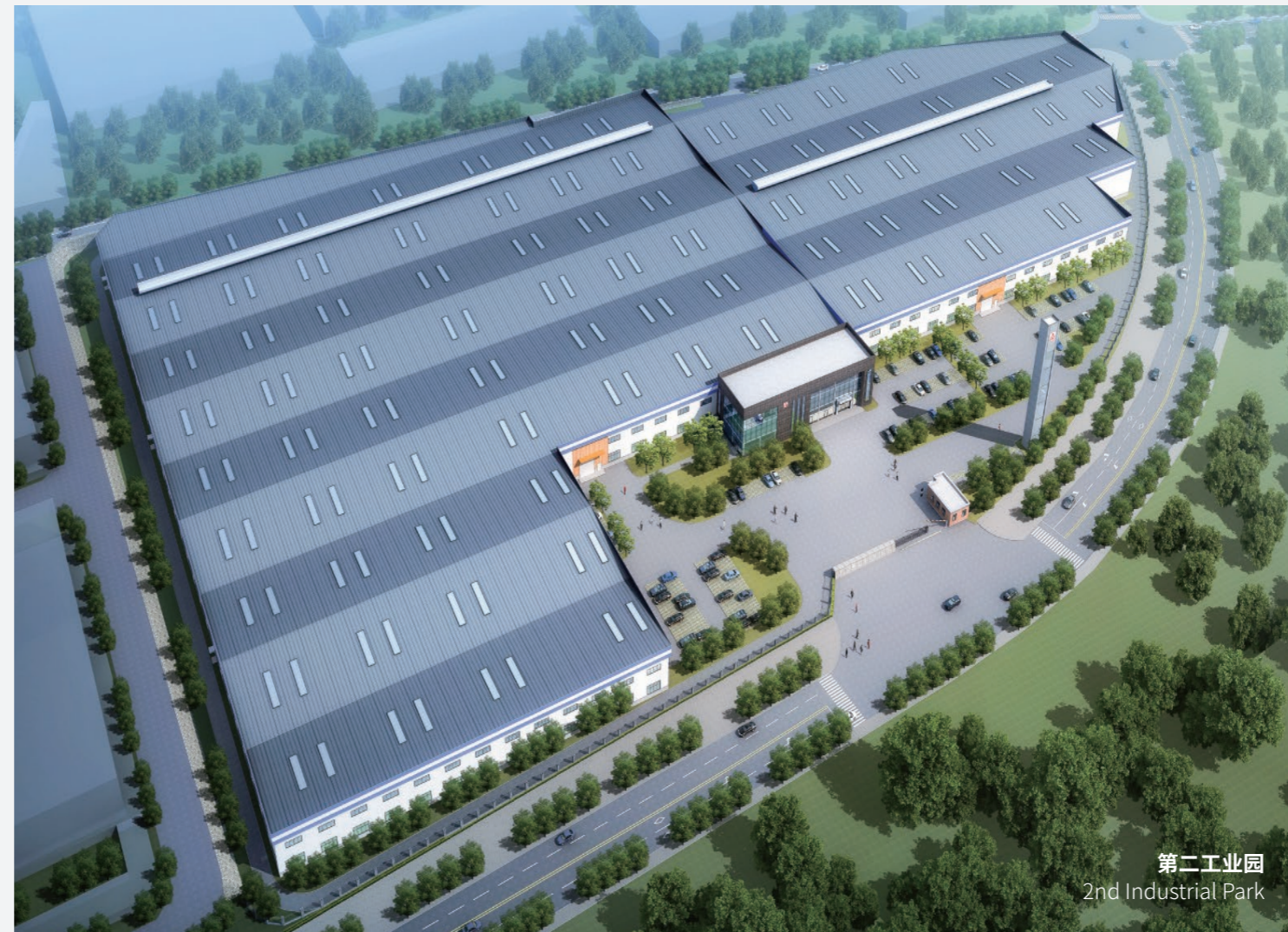
Sales of air compressor (in units)
销售空气压缩机
165,500
台

Effective national patents
国家有效专利
91
项

精工制造

LEAN Manufacturing

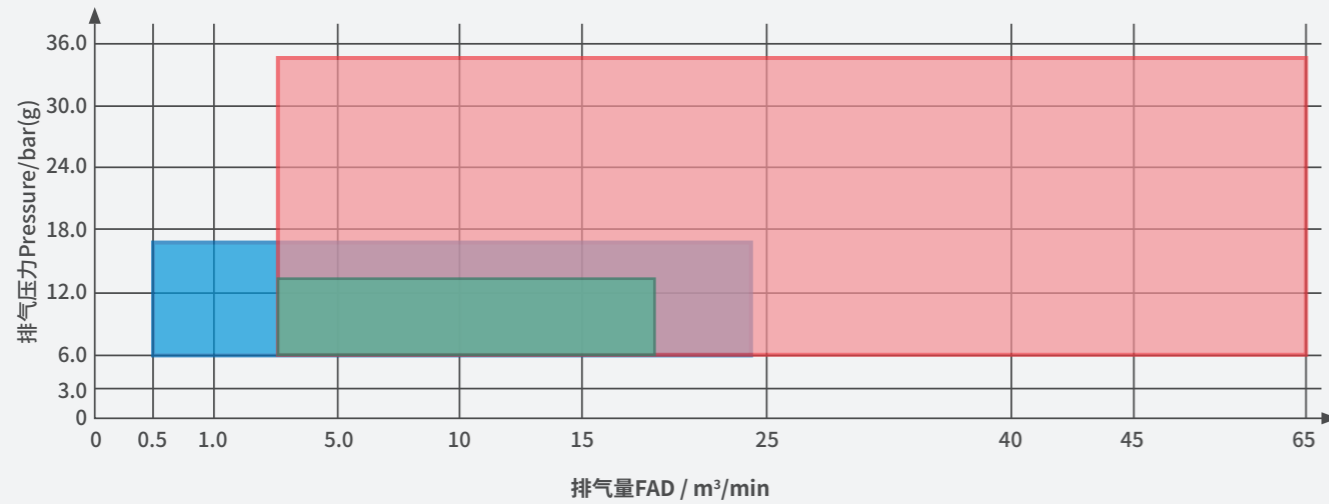
为响应国家“节能减排”号召，2020年志高股份投入巨资，打造了具备10亿产能规模的“节能空气压缩机”制造基地——志高动力**第二工业园**。该厂区占地8万m²，建筑面积达5.8万m²。厂区配有加工中心、高端磨床、高精度三坐标等先进加工及检测设备，为凿岩机、螺杆主机等精密零件的制造保驾护航。In response to the national call for "energy conservation and emission reduction", in 2020, Zhigao Group invested heavily in building a "energy-saving air compressor" manufacturing base with a production capacity of 1 billion yuan - Zhigao Power 2nd Industrial Park. The factory covers an area of 80000 square meters, with a building area of 58000 square meters. The factory area is equipped with advanced processing and testing equipment such as machining centers, high-end grinding machines, and high-precision three coordinate machines, providing capability for the manufacturing of high-precision components such as rock drills and screw air ends.



“螺杆主机”100% 自主研发+生产

“Screw Air End” through 100% INDEPENDENT RESEARCH AND DEVELOPMENT

志高螺杆主机功能覆盖图 Screw air end capacity coverage



高效的螺杆转子型线 High-efficiency screw rotor profile

- 志高螺杆主机转子采用公司自主研发的转子型线, 相对传统型线, 其具有更合理的泄漏三角形、更短的接触线、更小的排气封闭容积, 转子加工性能优越, 使得压缩机具有卓越的容积效率及绝热效率。
- The self-developed rotor profile has a more reasonable leakage triangle, shorter contact line and smaller discharge closed volume, and with better CNC machining characteristics, excellent volumetric efficiency and thermal insulation efficiency.

钻机的核心部件 —— 最优的加工制造保障

CORE COMPONENTS OF drill rig-with best manufacture process and fabrication technology.



进口加工中心 Imported processing center

- 壳体加工采用日本进口加工中心, 加工精度可达±0.005mm。
- Housing machining adopts machining center imported from Japan, the accuracy can reach ±0.005mm.



进口磨床 Imported grinder

- 转子加工采用德国KAPP、英国霍洛伊德磨床, 加工精度可达±0.001mm。
- The rotor machining adopts German KAPP and British Holroyd grinding machine, with the machining precision to be ±0.001mm.



进口检测三坐标 Import inspection 3 coordinates

- 转子和壳体检测采用德国进口徕斯三坐标测量仪。
- The rotor and housing inspection adopts Leitz coordinate measuring instrument imported from Germany.



恒温无尘车间 Dust free constant temperature workshop

- 精湛的工艺流程和专用工装, 保证螺杆主机的装配质量。
- Thorough workmanship and specialized tooling ensure the assembly quality of the screw air end.

ZEGA 工业螺杆式空气压缩机

Industrial screw air compressor

单级压缩 8bar

SEC

S: 螺杆/Screw
E: 电动/Electrical
C: 工频/Power frequency

功率范围 Power range:
7.5 kW - 132 kW



双级压缩 8bar

该系列产品
运行转速
3000 rpm/min
产品性价比高

This series of products
operating speed 3000 rpm/min
with high cost-effectiveness
of the product.

双级压缩 7bar

该系列产品
运行转速
1500rpm/min
运行噪音有很好的控制

This series of products
operating speed
1500rpm/min
The running noise is well controlled.

双级压缩 6-8bar

该系列产品
运行转速1500rpm/min
加大配置可在6-8bar的压力范围
内自由调节, 更加节能

This series of products operating speed 1500
rpm/min. With increased configuration, it can
be freely adjusted within a pressure range of
6-8 bar, making it more energy-efficient.

特殊压力系列

SELV-1.5

S: 螺杆/Screw
E: 电动/Electrical
L: 低压/Low pressure
V: 变频/Variou frequency

额定压力 rated pressure: 1.5 bar
功率范围 Power range: 37 kW - 110 kW



SOV

S: 螺杆/Screw
O: 油冷电动
/Electrical oil cooling
V: 变频/Variou frequency

功率范围 Power range:
5.5 kW - 37 kW



SEV-D



S: 螺杆/Screw E: 电动/Electrical
V: 变频/Variou frequency
D: 二级压缩/Two-stage compression

功率范围 Power range: 22 kW - 132 kW

SEC-D

S: 螺杆/Screw
E: 电动/Electrical
C: 工频/Power frequency
D: 二级压缩
/Two-stage compression

功率范围 Power range:
55 kW - 250 kW



ASEC-D

A: 先进/Advanced
S: 螺杆/Screw
E: 电动/Electrical
C: 工频/Power frequency
D: 二级压缩
/Two-stage compression

功率范围 Power range: 55 kW - 315 kW



SEV-D

S: 螺杆/Screw
E: 电动/Electrical
V: 变频/Variou frequency
D: 二级压缩
/Two-stage compression

功率范围 Power range:
55 kW - 250 kW



ASEV-D

A: 先进/Advanced
S: 螺杆/Screw
E: 电动/Electrical
V: 变频/Variou frequency
D: 二级压缩
/Two-stage compression

功率范围 Power range: 55 kW - 315 kW



SEV

S: 螺杆/Screw
E: 电动/Electrical
V: 变频/Variou frequency

功率范围 Power range:
55 kW - 132 kW



SELV-3

S: 螺杆/Screw
E: 电动/Electrical
L: 低压/Low pressure
V: 变频/Variou frequency

额定压力 rated pressure: 3 bar
功率范围 Power range: 37 kW - 160 kW



SOGV-16

S: 螺杆/Screw
O: 油冷电动/Electrical oil cooling
G: 气罐/Gas cylinder
V: 变频/Variou frequency

额定压力 rated pressure: 16 bar
功率范围 Power range: 15 kW - 22 kW



SEC·S-8bar

电动/工频/螺杆空气压缩机/单级压缩/额定压力8bar
Electrical / Power frequency / Screw air compressor / Single-stage compression / Rated pressure 8 bar

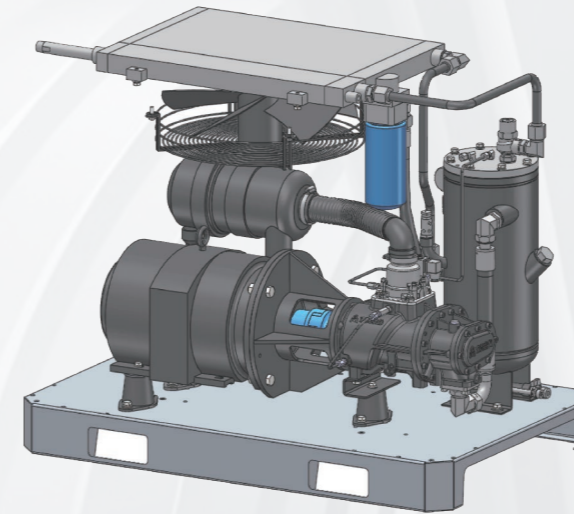
功率范围 Power range:

7.5 kW - 132 kW



型号 Model	电动机功率 Electric motor power	电压/频率 Voltage/ Frequency	额定压力 Rated pressure	排气量 Air discharge capacity FAD	额定转速 Rated speed	重量 Weight	外形尺寸(长×宽×高) Dimensions (L x W x H)	出口管径 Air discharge valve size
SEC 7.5S-8	7.5 kW	380 V/50 HZ	8 bar	1.00 m ³ /min	2900 RPM	190 kg	980×650×880 mm	DN15 (R1/2")
SEC 11S-8	11 kW	380 V/50 HZ	8 bar	1.70 m ³ /min	2920 RPM	295 kg	1150×750×1000 mm	DN20 (R3/4")
SEC 15S-8	15 kW	380 V/50 HZ	8 bar	2.25 m ³ /min	2920 RPM	310 kg	1150×750×1000 mm	DN20 (R3/4")
SEC 22S-8	22 kW	380 V/50 HZ	8 bar	3.40 m ³ /min	2940 RPM	430 kg	1300×850×1170 mm	DN25 (R1")
SEC 37S-8	37 kW	380 V/50 HZ	8 bar	6.10 m ³ /min	2940 RPM	625 kg	1430×1010×1285 mm	DN40 (R1-1/2")
SEC 55S-8	55 kW	380 V/50 HZ	8 bar	9.60 m ³ /min	2960 RPM	950 kg	1610×1240×1460 mm	DN40 (R1-1/2")
SEC 75S-8	75 kW	380 V/50 HZ	8 bar	12.5 m ³ /min	2960 RPM	1165 kg	1700×1230×1540 mm	DN50 (R2")
SEC 90S-8	90 kW	380 V/50 HZ	8 bar	15.0 m ³ /min	2970 RPM	1435 kg	1850×1290×1580 mm	DN50 (R2")
SEC 110S-8	110 kW	380 V/50 HZ	8 bar	19.0 m ³ /min	2970 RPM	1650 kg	2100×1420×1680 mm	DN65 (R2-1/2")
SEC 132S-8	132 kW	380 V/50 HZ	8 bar	23.2 m ³ /min	2970 RPM	1695 kg	2100×1420×1680 mm	DN65 (R2-1/2")

全系列可定制10/13bar产品;电压、频率可根据用户供电定制。
The full range of 10/13 bar products can be customized, with the voltage and frequency customized as required by the customers.



产品特点 PRODUCT FEATURES

高效节能 超长寿命 高性价比

Efficient and energy-saving / Durable / High cost-effectiveness

01 高效主机 Efficient air end

- ◆ 采用高效的大直径转子主机, 噪音更低、效率更高、寿命更长;
- ◆ Independently developed and optimized rotor structure air end, lower noise, higher efficiency, longer life;

02 IP54电机 IP54 Motor

- ◆ 全系列采用IP54及以上防护等级电机, 保证设备在恶劣环境下的稳定运行。
- ◆ All the series adopt the motors with protection level to be IP54 and above to ensure stable operation in harsh environments.

03 进气系统 Air Intake System

- ◆ 一体式进气系统, 有效防止润滑油外溢, 确保低负荷启动, 减少耗电;
- ◆ Integrated air intake system, effectively prevent lubricating oil spill, ensure low load start, reduce power consumption;

04 控制系统 Control System

- ◆ 简洁、精确的控制系统确保设备的安全运行;
- ◆ Simple and accurate control system ensures safe operation of the equipment;

05 油气分离 Oil Air Separation

- ◆ 高效油气分离器, 在运行时保证了油气分离能力, 使空气含油量更低;
- ◆ Efficient oil air separator ensures a good oil air separation effect during operation, resulting in lower oil content in the air;

06 合理布局 Reasonable Layout

- ◆ 主机与电机采用低重心设计, 降低噪音与振动;
- ◆ The air compressor and motor are designed with low center of gravity to reduce noise and vibration;
- ◆ 设备内部布局合理, 空间大, 方便维护保养;
- ◆ The equipment internal layout is reasonable, with large space convenient for maintenance.

适用工况 WORKING CONDITIONS

重、轻工业 Heavy and light industry	矿山 Mining industry
水电 Water resource and hydro power	军工 Defense industry
船舶制造 Ship building	海港 Seaport
能源 Energy industry	工程建设 Construction



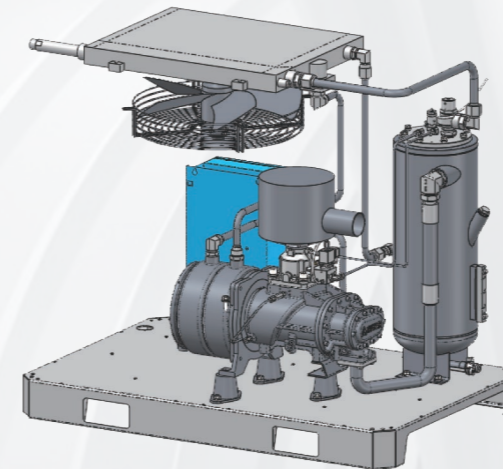
SOV·S-8bar | 电动/油冷变频/螺杆空气压缩机/单级压缩/额定压力8bar
Electrical / Oil cooling frequency conversion / Screw air compressor / Single-stage compression / Rated pressure 8 bar

功率范围 Power range:
5.5 kW - 37 kW



型号 Model	电动机功率 Electric motor power	电压/频率 Voltage/ Frequency	额定压力 Rated pressure	排气量 Air discharge capacity FAD	额定转速 Rated speed	重量 Weight	外形尺寸(长×宽×高) Dimensions (L x W x H)	出口管径 Air discharge valve size
SOV 5.5S-8	5.5 kW	380 V/50 HZ	8 bar	0.28-0.7 m ³ /min	5500 RPM	130 kg	660×630×950 mm	DN15 (R1/2")
SOV 7.5S-8	7.5 kW	380 V/50 HZ	8 bar	0.4-1.15 m ³ /min	3600 RPM	150 kg	930×680×880 mm	DN15 (R1/2")
SOV 11S-8	11 kW	380 V/50 HZ	8 bar	0.72-1.83 m ³ /min	3000 RPM	230 kg	1150×750×1000 mm	DN20(R3/4")
SOV 15S-8	15 kW	380 V/50 HZ	8 bar	1-2.41 m ³ /min	3000 RPM	235 kg	1150×750×1000 mm	DN20(R3/4")
SOV 22S-8	22 kW	380 V/50 HZ	8 bar	1.5-3.78 m ³ /min	3000 RPM	300 kg	1300×850×1170 mm	DN25(R1")
SOV 37S-8	37 kW	380 V/50 HZ	8 bar	2.6-6.5 m ³ /min	3000 RPM	485 kg	1430×1010×1406 mm	DN40(R1-1/2")

全系列可定制10/13bar产品;电压、频率可根据用户供电定制。
The full range of 10/13 bar products can be customized, with the voltage and frequency customized as required by the customers.



产品特点 PRODUCT FEATURES

高效节能 超长寿命 高性价比

Efficient and energy-saving / Durable / High cost-effectiveness

01 高效主机 Efficient air end

◆采用自主研发的大转子高效主机,在宽广频率范围内仍能保持高效率运行,噪音更低、效率更高、寿命更长;
◆Independently developed and optimized rotor structure air end, which maintain high efficiency operation in a wide frequency range with lower noise, higher efficiency, longer life;

02 永磁油冷电机 Permanent magnet oil-cooled motor

◆采用IE5超高效油冷一体化永磁IP65电机直接驱动,传动效率更高、噪音更低,防护等级高;
◆Adopt IE5 ultra-efficient oil-cooled integrated permanent magnet IP65 motor directly driven, which has higher transmission efficiency and lower noise level with a higher protection level;

03 智能变频 Intelligent Inverter

◆变频启动避免了电网冲击,智能变频压力控制减少了主机高能耗运行时间,精确的恒压控制维持管道压力偏差在0.1bar以内;
◆Inverter starting avoids grid shocks, intelligent inverter air pressure control reduces energy-intensive run times, and precise constant voltage control maintains system pressure deviations within 0.1 bar;

04 冷却系统 Cooling System

◆采用高效的外转子轴流冷却风机,效率高、寿命长。
◆Adopting an efficient external rotor axial flow fan with high efficiency and long service life.

05 油气分离 Oil Air Separation

◆高效油气分离器,在工作运行压力下保持超极致控油雾能力,保护环境。
◆High efficient separator maintains extreme oil content control ability under all operating pressures to protect the environment.

06 合理布局 Reasonable Layout

◆管路采用减震结构硬管连接,布局美观且耐用。
◆The pipeline adopts shock absorbing structure and hard pipe connection, the layout is neat and durable.

适用工况 WORKING CONDITIONS

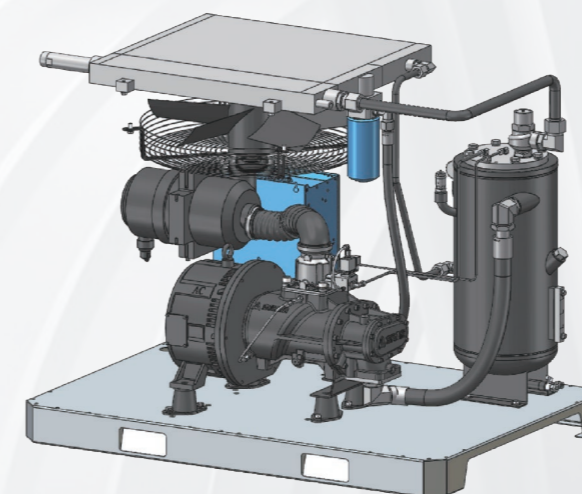
重、轻工业 Heavy and light industry	矿山 Mining industry
水电 Water resource and hydro power	军工 Defense industry
船舶制造 Ship building	海港 Seaport
能源 Energy industry	工程建设 Construction



SEV·S-8bar | 电动/变频/螺杆空气压缩机/单级压缩/额定压力8bar
Electrical / Various frequency / Screw air compressor / Single-stage compression / Rated pressure 8 bar

功率范围 Power range:

55 kW - 132 kW



产品特点 PRODUCT FEATURES

高效节能 超长寿命 高性价比

Efficient and energy-saving / Durable / High cost-effectiveness

01 高效主机 Efficient air end

◆采用自主研发的大转子高效螺杆主机，噪音更低、效率更高、寿命更长；
◆Independently developed and optimized rotor structure air end, lower noise, higher efficiency, longer life;

02 智能变频 Intelligent Inverter

◆变频启动避免了电网冲击，智能变频压力控制减少了主机高能耗运行时间，精确的恒压控制维持管道压力偏差在0.1bar以内；
◆Inverter starting avoids grid shocks, intelligent inverter air pressure control reduces energy-intensive run times, and precise constant voltage control maintains system pressure deviations within 0.1 bar;

03 进气系统 Air Intake System

◆一体式进气系统，有效防止润滑油外溢，确保低负荷启动，减少耗电；
◆Integrated air intake system, effectively prevent lubricating oil spill, ensure low load start, reduce power consumption;

04 优化管路 Optimized Pipeline

◆整机系统与管路，每一个细节都进行细致优化，在保证稳定性的同时，尽可能的减少能耗损耗；
◆Every detail is greatly optimized on the whole system and pipeline, ensure its stability as well as reduce the energy consumption as much as possible;

05 低重心设计 Low center of gravity design

◆主机与电机采用低重心设计，降低噪音与振动；
◆The air compressor and motor are designed with low center of gravity to reduce noise and vibration;

06 合理布局 Reasonable Layout

◆设备内部布局合理，空间大，方便维护保养。
◆The equipment internal layout is reasonable, with large space convenient for maintenance.

型号 Model	电动机功率 Electric motor power	电压/频率 Voltage/ Frequency	额定压力 Rated pressure	排气量 Air discharge capacity FAD	额定转速 Rated speed	重量 Weight	外形尺寸(长×宽×高) Dimensions (L x W x H)	出口管径 Air discharge valve size
SEV 55S-8	55 kW	380 V/50 HZ	8 bar	4-9.7 m ³ /min	3000 RPM	885 kg	1610×1240×1460 mm	DN40 (R1-1/2")
SEV 75S-8	75 kW	380 V/50 HZ	8 bar	5-12.6 m ³ /min	3000 RPM	1055 kg	1700×1230×1540 mm	DN50 (R2")
SEV 90S-8	90 kW	380 V/50 HZ	8 bar	6.2-15.5 m ³ /min	3000 RPM	1230 kg	1850×1290×1580 mm	DN50 (R2")
SEV 110S-8	110 kW	380 V/50 HZ	8 bar	8-19.8 m ³ /min	3000 RPM	1560 kg	2100×1420×1680 mm	DN65 (R2-1/2")
SEV 132S-8	132 kW	380 V/50 HZ	8 bar	9.3-23.2 m ³ /min	3000 RPM	1675 kg	2100×1420×1680 mm	DN65 (R2-1/2")

全系列可定制10/13bar产品;电压、频率可根据用户供电定制。
The full range of 10/13 bar products can be customized, with the voltage and frequency customized as required by the customers.

适用工况 WORKING CONDITIONS

重、轻工业 Heavy and light industry	矿山 Mining industry
水电 Water resource and hydro power	军工 Defense industry
船舶制造 Ship building	海港 Seaport
能源 Energy industry	工程建设 Construction



SEV·D-8bar | 电动/变频/螺杆空气压缩机/双级压缩/额定压力8bar
Electrical / Various frequency / Screw air compressor / Two-stage compression / Rated pressure 8 bar

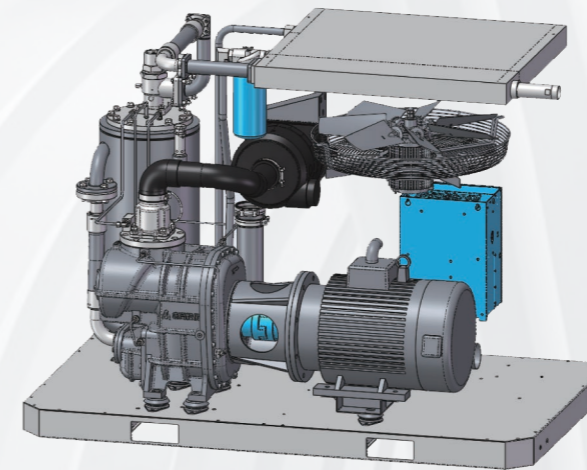
功率范围 Power range:

22 kW - 132 kW



型号 Model	电动机功率 Electric motor power	电压/频率 Voltage/ Frequency	额定压力 Rated pressure	排气量 Air discharge capacity FAD	额定转速 Rated speed	重量 Weight	外形尺寸(长×宽×高) Dimensions (L x W x H)	出口管径 Air discharge valve size
SEV 22D-8	22 kW	380 V/50 HZ	8 bar	1.7-4.2 m ³ /min	3000 RPM	485 kg	1495×900×1240 mm	R1-1/4"
SEV 37D-8	37 kW	380 V/50 HZ	8 bar	2.8-7.1 m ³ /min	3000 RPM	715 kg	1735×1045×1345 mm	R1-1/2"
SEV 45D-8	45 kW	380 V/50 HZ	8 bar	3.5-8.83 m ³ /min	3000 RPM	1115 kg	2160×1310×1660 mm	R2"
SEV 55D-8	55 kW	380 V/50 HZ	8 bar	4.7-11.78 m ³ /min	3000 RPM	1190 kg	2160×1310×1660 mm	R2"
SEV 75D-8	75 kW	380 V/50 HZ	8 bar	5.7-14.24 m ³ /min	3000 RPM	1400 kg	2160×1310×1660 mm	R2"
SEV 90D-8	90 kW	380 V/50 HZ	8 bar	7.24-18.1 m ³ /min	3000 RPM	2060 kg	2475×1650(1685)×1965 mm	DN65
SEV 110D-8	110 kW	380 V/50 HZ	8 bar	9.5-23.8 m ³ /min	3000 RPM	2850 kg	2815×1825(1875)×2185 mm	DN80
SEV 132D-8	132 kW	380 V/50 HZ	8 bar	10.8-27 m ³ /min	3000 RPM	3050 kg	2815×1825(1875)×2185 mm	DN80

全系列可定制10/13bar产品;电压、频率可根据用户供电定制。
The full range of 10/13 bar products can be customized, with the voltage and frequency customized as required by the customers.



产品特点 PRODUCT FEATURES

高效节能 | 超长寿命 | 高性价比

Efficient and energy-saving / Durable / High cost-effectiveness

01 高效主机 *Efficient air end*

- ◆采用自主研发的大转子高效螺杆主机, 噪音更低、效率更高、寿命更长;
- ◆Independently developed and optimized rotor structure air end, lower noise, higher efficiency, longer life;

02 永磁电机 *Permanent magnet motor*

- ◆高效永磁电机, 无论轻载或者重载, 效率均能保持在95%以上;
- ◆High efficient permanent magnet motor, whether light load or heavy load, the efficiency can be always maintained above 95%;

03 双变频控制 *Dual Mode Frequency Conversion Control*

- ◆双变频一体控制, 线路简单操作便捷, 在保持原有电机变频特点外, 增加了对散热风机的控制精准度, 让设备的散热系统在各种温度环境下也可以稳定工作;
- ◆Dual-mode frequency conversion integrated control simplifies circuits, increases the control accuracy of the cooling fan, and enables the air compressor to work smoothly in various ambient temperature environments;

04 控制系统 *Control System*

- ◆采用先进的微电脑控制驱动系统实现智能控制、变速控制气量自动调节。
- ◆Advanced microcomputer control drive system is adopted to realize intelligent control and variable speed controlling air flow automatically.

05 进气系统 *Air Intake System*

- ◆进气系统采用重载空滤, 独特设计的进气箱更加有效的过滤空气中的粉尘颗粒, 保证进气质量, 延长主机寿命;
- ◆The air intake system adopts heavy load air filter, the unique design of the intake box can filter the dust particles in the air more effectively, ensure the intake quality and extend the service life of the air compressor;

06 合理布局 *Reasonable Layout*

- ◆管路采用减震结构硬管连接, 布局美观且耐用;
- ◆The pipeline adopts shock absorbing structure and hard pipe connection, the layout is neat and durable;

适用工况 WORKING CONDITIONS

重、轻工业 Heavy and light industry	矿山 Mining industry
水电 Water resource and hydro power	军工 Defense industry
船舶制造 Ship building	海港 Seaport
能源 Energy industry	工程建设 Construction



SEC·D-7bar | 电动/工频/螺杆空气压缩机/双级压缩/额定压力7bar
Electrical / Power frequency / Screw air compressor / Two-stage compression / Rated pressure 7 bar

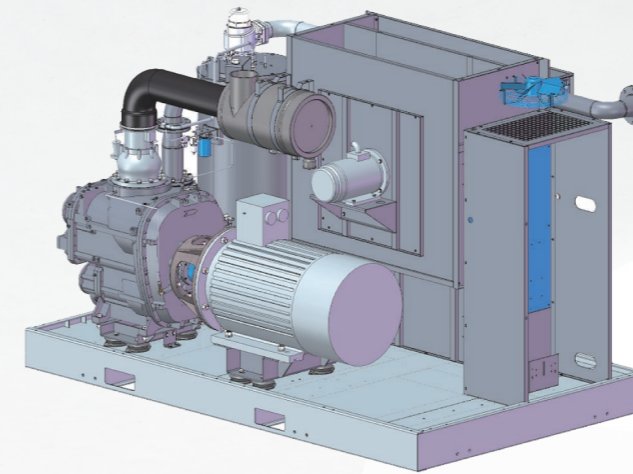
功率范围 Power range:

55 kW - 250 kW



型号 Model	电动机功率 Electric motor power	电压/频率 Voltage/ Frequency	额定压力 Rated pressure	排气量 Air discharge capacity FAD	额定转速 Rated speed	重量 Weight	外形尺寸(长×宽×高) Dimensions (L x W x H)	出口管径 Air discharge valve size
SEC 55D-7	55 kW	380 V/50 HZ	7 bar	13.5 m ³ /min	1480 RPM	1330 kg	2160×1310×1660 mm	R2"
SEC 75D-7	75 kW	380 V/50 HZ	7 bar	16.7 m ³ /min	1480 RPM	1550 kg	2160×1310×1660 mm	R2"
SEC 90D-7	90 kW	380 V/50 HZ	7 bar	20.7 m ³ /min	1480 RPM	2390 kg	2475×1650(1685)×1965 mm	DN65
SEC 110D-7	110 kW	380 V/50 HZ	7 bar	26.1 m ³ /min	1480 RPM	2800 kg	2815×1825(1875)×2185 mm	DN80
SEC 132D-7	132 kW	380 V/50 HZ	7 bar	29.6 m ³ /min	1480 RPM	3000 kg	2815×1825(1875)×2185 mm	DN80
SEC 160D-7	160 kW	380 V/50 HZ	7 bar	32 m ³ /min	1480 RPM	4800 kg	3500×2072(2150)×2245 mm	DN125
SEC 185D-7	185 kW	380 V/50 HZ	7 bar	38 m ³ /min	1480 RPM	4850 kg	3500×2072(2150)×2245 mm	DN125
SEC 200D-7	200 kW	380 V/50 HZ	7 bar	41.9 m ³ /min	1480 RPM	6300 kg	3850×2300(2420)×2600 mm	DN125
SEC 220D-7	220 kW	380 V/50 HZ	7 bar	45.8 m ³ /min	1480 RPM	7200 kg	3850×2300(2420)×2600 mm	DN125
SEC 250D-7	250 kW	380 V/50 HZ	7 bar	52.7 m ³ /min	1490 RPM	7300 kg	3850×2300(2420)×2600 mm	DN125

全系列可定制10/13bar产品;电压、频率可根据用户供电定制。
The full range of 10/13 bar products can be customized, with the voltage and frequency customized as required by the customers.



产品特点 PRODUCT FEATURES

高效节能 超长寿命 高性价比

Efficient and energy-saving / Durable / High cost-effectiveness

04 进气系统 Air Intake System

◆采用独特的进气系统及高品质定制空滤,确保进入机头的空气质量,延长主机寿命;
◆Unique air intake system and high quality customized air filter to ensure the quality of air intake and extend the service life of the air compressor;

05 冷却系统 Cooling System

◆采用大换热面积设计冷却器,冷却效率高,有效防止机器高温,适应更恶劣的工况,延长适应寿命;
◆Large heat exchange area cooler with high cooling efficiency; Adapt to wider ambient temperature and prolong life;

06 油气分离 Oil Air Separation

◆高效油气分离器,在所有运行压力下保持超极致控油雾能力,保护环境;
◆Efficient oil air separator ensures a good oil air separation effect during operation, resulting in lower oil content in the air;

07 合理布局 Reasonable Layout

◆整机系统与管路,每一个细节都进行细致优化,在保证稳定性的同时,尽可能的减少能耗损耗;
◆Every detail is greatly optimized on the whole system and pipeline, ensure its stability as well as reduce the energy consumption as much as possible;

01 双级压缩主机 Two-stage Compression Air End

◆采用大转子低转速双级压缩主机,噪音更低、效率更高;
◆Optimized rotor structure and low speed two-stage compression air end, lower noise, higher efficiency;

02 IP54电机 IP54 Motor

◆全系列采用IP54及以上防护等级电机,保证设备在恶劣环境下稳定运行;
◆All the series adopt the motors with protection level to be IP54 and above to ensure stable operation in harsh environments.

03 控制系统 Control System

◆采用先进的微电脑控制驱动系统实现智能控制、变速控制气量自动调节。
◆Advanced microcomputer control drive system is adopted to realize intelligent control and variable speed controlling air flow automatically.

适用工况 WORKING CONDITIONS

重、轻工业 Heavy and light industry	矿山 Mining industry
水电 Water resource and hydro power	军工 Defense industry
船舶制造 Ship building	海港 Seaport
能源 Energy industry	工程建设 Construction



SEV·D-7bar | 电动/变频/螺杆空气压缩机/双级压缩/额定压力7bar
Electrical / Various frequency / Screw air compressor / Two-stage compression / Rated pressure 7 bar

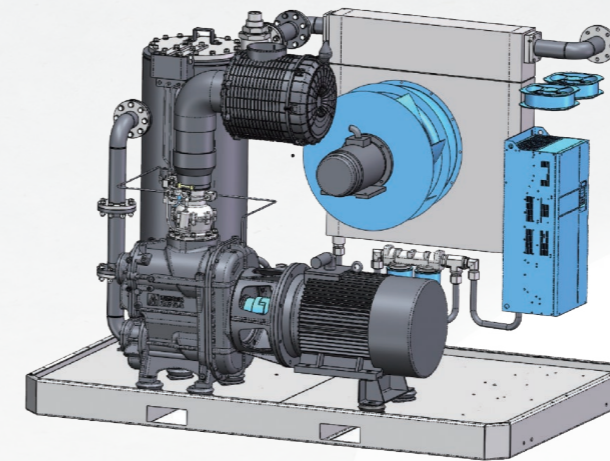
功率范围 Power range:

55 kW - 250 kW



型号 Model	电动机功率 Electric motor power	电压/频率 Voltage/ Frequency	额定压力 Rated pressure	排气量 Air discharge capacity FAD	额定转速 Rated speed	重量 Weight	外形尺寸(长×宽×高) Dimensions (L x W x H)	出口管径 Air discharge valve size
SEV 55D-7	55 kW	380 V/50 HZ	7 bar	12.5-13.7 m ³ /min	1500 RPM	1350 kg	2160×1310×1660 mm	R2"
SEV 75D-7	75 kW	380 V/50 HZ	7 bar	15.5-17.0 m ³ /min	1500 RPM	1595 kg	2160×1310×1660 mm	R2"
SEV 90D-7	90 kW	380 V/50 HZ	7 bar	19.2-21.0 m ³ /min	1500 RPM	2420 kg	2475×1650(1685)×1965 mm	DN65
SEV 110D-7	110 kW	380 V/50 HZ	7 bar	20.0-26.5 m ³ /min	1500 RPM	2850 kg	2815×1825(1875)×2185 mm	DN80
SEV 132D-7	132 kW	380 V/50 HZ	7 bar	25.5-30.0 m ³ /min	1500 RPM	3050 kg	2815×1825(1875)×2185 mm	DN80
SEV 160D-7	160 kW	380 V/50 HZ	7 bar	13.0-32.5 m ³ /min	1500 RPM	4900 kg	3500×2072(2150)×2245 mm	DN125
SEV 185D-7	185 kW	380 V/50 HZ	7 bar	15.4-38.5 m ³ /min	1500 RPM	4950 kg	3500×2072(2150)×2245 mm	DN125
SEV 200D-7	200 kW	380 V/50 HZ	7 bar	17.0-42.5 m ³ /min	1500 RPM	6250 kg	3850×2300(2420)×2600 mm	DN125
SEV 220D-7	220 kW	380 V/50 HZ	7 bar	18.6-46.5 m ³ /min	1500 RPM	7020 kg	3850×2300(2420)×2600 mm	DN125
SEV 250D-7	250 kW	380 V/50 HZ	7 bar	21.3-53.2 m ³ /min	1500 RPM	7100 kg	3850×2300(2420)×2600 mm	DN125

全系列可定制10/13bar产品;电压、频率可根据用户供电定制。
The full range of 10/13 bar products can be customized, with the voltage and frequency customized as required by the customers.



01 双级主机 Two-stage Compression Air End

- ◆采用大转子低转速双级压缩主机, 噪音更低、效率更高;
- ◆Optimized rotor structure and low speed two-stage compression air end, lower noise, higher efficiency;

02 高效电机 Efficient Motor

- ◆高效永磁电机, 无论轻载或者重载, 效率均能保持在95%以上;
- ◆High efficient permanent magnet motor, whether light load or heavy load, the efficiency can be always maintained above 95%;

03 控制系统 Control System

- ◆采用先进的微电脑控制驱动系统实现智能控制、变速控制气量自动调节。
- ◆Advanced microcomputer control drive system is adopted to realize intelligent control and variable speed controlling air flow automatically.

产品特点 PRODUCT FEATURES

高效节能 超长寿命 高性价比

Efficient and energy-saving / Durable / High cost-effectiveness

04 进气系统 Air Intake System

- ◆采用独特的进气系统及高品质定制空滤, 确保进入机头的空气质量, 延长主机寿命。
- ◆Unique air intake system and high quality customized air filter to ensure the quality of air intake and extend the service life of the air compressor.

05 冷却系统 Cooling System

- ◆采用大换热面积设计冷却器, 冷却效率高, 有效防止机器高温, 适应更恶劣的工况, 延长适应寿命。
- ◆Large heat exchange area cooler with high cooling efficiency; Adapt to wider ambient temperature and prolong life.

06 油气分离 Oil Air Separation

- ◆高效油气分离器, 在所有运行压力下保持超极致控油雾能力, 保护环境。
- ◆Efficient oil air separator ensures a good oil air separation effect during operation, resulting in lower oil content in the air;

07 合理布局 Reasonable Layout

- ◆整机系统与管路, 每一个细节都进行细致优化, 在保证稳定性的同时, 尽可能的减少能耗损耗;
- ◆Every detail is greatly optimized on the whole system and pipeline, ensure its stability as well as reduce the energy consumption as much as possible;

适用工况 WORKING CONDITIONS

重、轻工业 Heavy and light industry	矿山 Mining industry
水电 Water resource and hydro power	军工 Defense industry
船舶制造 Ship building	海港 Seaport
能源 Energy industry	工程建设 Construction



ASEC·D-6-8bar | 电动/工频/螺杆空气压缩机/双级压缩/额定压力6-8bar
Electrical / Power frequency / Screw air compressor / Two-stage compression / Rated pressure 6-8 bar

功率范围 Power range:

160 kW - 315 kW

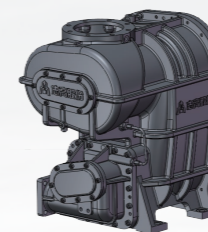


型号 Model	电动机功率 Electric motor power	电压/频率 Voltage/ Frequency	额定压力 Rated pressure	排气量 Air discharge capacity FAD	额定转速 Rated speed	重量 Weight	外形尺寸(长×宽×高) Dimensions (L x W x H)	出口管径 Air discharge valve size
ASEC 160D	160 kW	380 V/50 HZ	6-8 bar	33 m ³ /min	1480 RPM	5700 kg	4200(4260)×2090×2360 mm	DN100
ASEC 185D	185 kW	380 V/50 HZ	6-8 bar	37.6 m ³ /min	1480 RPM	5800 kg	4200(4260)×2090×2360 mm	DN100
ASEC 200D	200 kW	380 V/50 HZ	6-8 bar	41.6 m ³ /min	1480 RPM	6650 kg	4200(4260)×2090×2360 mm	DN100
ASEC 220D	220 kW	380 V/50 HZ	6-8 bar	45.8 m ³ /min	1480 RPM	6850 kg	4500(4580)×2280×2490 mm	DN125
ASEC 250D	250 kW	380 V/50 HZ	6-8 bar	52.8 m ³ /min	1490 RPM	6900 kg	4500(4580)×2280×2490 mm	DN125
ASEC 280D	280 kW	380 V/50 HZ	6-8 bar	56.3 m ³ /min	1490 RPM	9880 kg	5050(5120)×2350×2580 mm	DN150
ASEC 315D	315 kW	380 V/50 HZ	6-8 bar	63.7 m ³ /min	1490 RPM	9880 kg	5050(5120)×2350×2580 mm	DN150

全系列可定制10/13bar产品;电压、频率可根据用户供电定制。
The full range of 10/13 bar products can be customized, with the voltage and frequency customized as required by the customers.

01 螺杆主机 Screw Air End

◆采用高效双级放大一档螺杆主机。较低的压缩比,保证其高效与耐久性,并降低轴承负荷,延长主机寿命,做到低噪音、低震动、高可靠性!
◆Adopt a high-efficiency 2-stage screw air end with an enlarged one-level size, lower compression ratio, which ensure its efficiency and durability, and reduce bearing load, prolong the service life of the air end, low noise, low vibration and, high reliability!



02 高效电机 Efficient Motor

◆采用全新一代高效电机,并放大余量设计,超一级能效,独立冷却风机,使电机散热不受变频调速影响,选用耐高温永磁体,耐温180°C不消磁。
◆Adopt a new generation of permanent magnetic variable frequency motor and designed with large margin, independent cooling fan, so that the motor cooling is not affected by variable-frequency speed regulation, choose high temperature resistant permanent magnet, temperature resistance up to 180°C without demagnetization.



03 双变频控制 Dual Mode Frequency Conversion Control

◆采用全新定制加大模块的矢量型变频器。启动平稳,机器运行时,可根据管网压力变化来调节压缩机产气量,避免了因为压力升高而造成能耗浪费。
◆Vector frequency converter with fully new customized enlarged module. The start is smooth, and the discharge volume of the air compressor can be adjusted according to the pressure change of the compressed air pipeline network, avoiding the waste of energy consumption due to the increase in pressure.



04 进气系统 Air Intake System

◆选用加大口径进气阀,进气阻力小,低压降设计使进气效率达到最佳。无极调节系统压力范围可达0~100%。
◆The adoption of large-diameter intake valve, low air intake resistance, low pressure-drop design to achieve the best intake efficiency. The pressure range of the stepless regulation system can reach 0~100%.



08 空气过滤器 Air Filter

◆采用较高容尘能力和较低的流动阻力设计,可滤除空气中微小固体颗粒,过滤效率为99.%,并带压差显示,确保系统各零部件的功能正常运行和经济的使用寿命。
◆With higher dust capacity and lower flow resistance design, filtering efficiency up to 99.%, and with differential pressure display, to ensure the normal functioning and economical service life of all components and parts of the system.



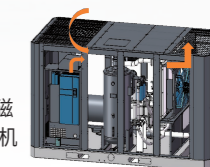
产品特点 PRODUCT FEATURES

高效节能 超长寿命 高性价比

Efficient and energy-saving / Durable / High cost-effectiveness

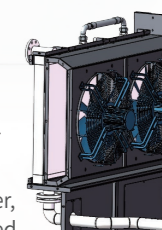
05 低噪音 Low Noise Motor

◆进风结构,上进上出;吸风式轴流风机+永磁变频,风扇噪音低,根据不同工况自动调节电机转速,能耗平均降低50%的同时,降低噪音。
◆Cooling air flow arrangement, upper-in/upper-out; Suction axial flow fan + permanent magnetic variable-frequency, low fan noise, the motor speed adjusted automatically according to different working conditions, energy consumption is reduced by 50% on average, while reducing noise;



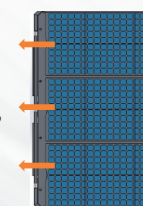
06 冷却器系统 Cooler System

◆采用放大设计25~30%余量的冷却器,双风扇设计,冷却器安装采用压板式固定,避免热膨胀引起冷却器损坏现象,确保机器在极恶劣环境下也能正常运行,且压降更低。
◆Using enlarged design 25~30% capacity cooler, dual fan design, cooler installation using fixed plate, to avoid cooler damage caused by thermal expansion, to ensure normal operation in a very harsh environment, and lower pressure drop.



07 空气预滤 Air Prefiltration

◆超大过滤面积,低吸阻力,过滤效率达90%以上,延长空气滤芯寿命,减少维护机器的费用,延长整机使用寿命。定期清理方便。
◆Enlarged filtration area, reduced suction resistance, filtration efficiency of more than 90%, prolonging the life of the air filter, convenient regular cleaning, reduced maintenance costs, and prolonging the service life of the air compressor.



ASEV·D-6-8bar | 电动/变频/螺杆空气压缩机/双级压缩/额定压力6-8bar
Electrical / Various frequency / Screw air compressor / Two-stage compression / Rated pressure 6-8 bar

功率范围 Power range:
55 kW - 315 kW

A 先锋产品
Advanced



型号 Model	电动机功率 Electric motor power	电压/频率 Voltage/ Frequency	额定压力 Rated pressure	排气量 Air discharge capacity FAD	额定转速 Rated speed	重量 Weight	外形尺寸(长×宽×高) Dimensions (L x W x H)	出口管径 Air discharge valve size
ASEV 55D	55 kW	380 V/50 HZ	6-8 bar	11.9 m ³ /min	1500 RPM	1650 kg	2350(2420)×1300×1850 mm	R2-1/2"
ASEV 75D	75 kW	380 V/50 HZ	6-8 bar	16 m ³ /min	1500 RPM	2750 kg	3050(3130)×1650×1960 mm	DN80
ASEV 90D	90 kW	380 V/50 HZ	6-8 bar	19.5 m ³ /min	1500 RPM	2820 kg	3050(3130)×1650×1960 mm	DN80
ASEV 110D	110 kW	380 V/50 HZ	6-8 bar	23.6 m ³ /min	1500 RPM	3600 kg	3700(3780)×1880×2110 mm	DN80
ASEV 132D	132 kW	380 V/50 HZ	6-8 bar	27 m ³ /min	1500 RPM	3650 kg	3700(3780)×1880×2110 mm	DN80
ASEV 160D	160 kW	380 V/50 HZ	6-8 bar	33.5 m ³ /min	1500 RPM	5800 kg	4200(4260)×2090×2360 mm	DN100
ASEV 185D	185 kW	380 V/50 HZ	6-8 bar	38 m ³ /min	1500 RPM	5900 kg	4200(4260)×2090×2360 mm	DN100
ASEV 200D	200 kW	380 V/50 HZ	6-8 bar	42.5 m ³ /min	1500 RPM	6700 kg	4200(4260)×2090×2360 mm	DN100
ASEV 220D	220 kW	380 V/50 HZ	6-8 bar	46.1 m ³ /min	1500 RPM	7000 kg	4500(4580)×2280×2490 mm	DN125
ASEV 250D	250 kW	380 V/50 HZ	6-8 bar	53.2 m ³ /min	1500 RPM	7050 kg	4500(4580)×2280×2490 mm	DN125
ASEV 280D	280 kW	380 V/50 HZ	6-8 bar	53.2 m ³ /min	1500 RPM	8880 kg	5050(5120)×2350×2580 mm	DN150
ASEV 315D	315 kW	380 V/50 HZ	6-8 bar	64.1 m ³ /min	1500 RPM	9080 kg	5050(5120)×2350×2580 mm	DN150

全系列可定制10/13bar产品;电压、频率可根据用户供电定制。
The full range of 10/13 bar products can be customized, with the voltage and frequency customized as required by the customers.

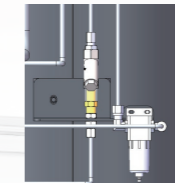
09 油过滤器 Oil Filter

◆采用定制高端玻璃纤维油过滤器,并放大一倍容量设计,压差显示,相同工况使用时间更长,有效延长主机正常使用寿命;
◆Premium fiberglass oil filter, and double the capacity design, with pressure drop display, longer running time, effectively extend the service life of air end;



10 油分芯回油 Oil Air Separator Element Return

◆可视回油单向阀,可实时观察油分芯回油情况,Y型过滤器,可阻拦细小颗粒回到主机,增大主机使用寿命。
◆Visual oil return check valve, can observe the real-time oil return situation, Y-type filter blocks fine particles, prolong the service life of air end.



11 油气分离滤芯 Oil Air Separator Element

◆加大定制的油分系统保证油气分离效果,空气含油量小余2ppm,空压机内部压力损失小。
◆Enlarged oil separation system to ensure the oil and air separating effect, oil content in discharge air is less than 2ppm, and the internal pressure loss of air compressor is reduced.



14 智能微电脑控制系统 Intelligent Micro Computer Control System

◆可选择全自动运行,操作方便快捷,并可实现计算机远程监控,启停及多台联控:标配物联网模块,外界云端智能管理系统,实时掌握机组运行状况。
◆Optional Fully automatic running, convenient operation, and can realize remote computer monitoring, start-stop and multi-unit joint control: equipped with standard IoT management system module, the external cloud intelligent management system, real-time control of the unit running status.



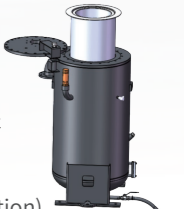
产品特点 PRODUCT FEATURES

高效节能 超长寿命 高性价比

Efficient and energy-saving / Durable / High cost-effectiveness

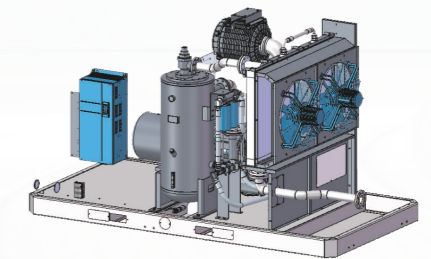
12 油气分离桶 Oil Air Separator

◆采用超 大容量油气分离桶,三重油气分离(重力,离心,过滤)分离效果好,且减少润滑油循环次数,提高润滑油使用时间。
◆Large capacity oil-air separation tank, triple separation function (gravity, centrifugation, filtration) separation effect is good, and reduce the repeated circulation of lubricating oil, improve the service life of lubricating oil.



13 合理布局 Reasonable Layout

◆合理的整机布局,人性化设计,维修空间大,零件布置合理易于保养拆卸方便维护与保养。
◆Reasonable overall layout, ergonomic design, spacious maintenance room, reasonable layout of components and parts is easy for disassembling the maintenance parts, which facilitates maintenance;



适用工况 WORKING CONDITIONS

重、轻工业 Heavy and light industry	矿山 Mining industry
水电 Water resource and hydro power	军工 Defense industry
船舶制造 Ship building	海港 Seaport
能源 Energy industry	工程建设 Construction



应用案例一 Application 1

SELV·S-1.5bar | 电动/变频/螺杆空气压缩机/单级压缩/额定压力1.5bar
Electrical / Various frequency / Screw air compressor / Single-stage compression / Rated pressure 1.5 bar

功率范围 Power range:
37 kW - 110 kW



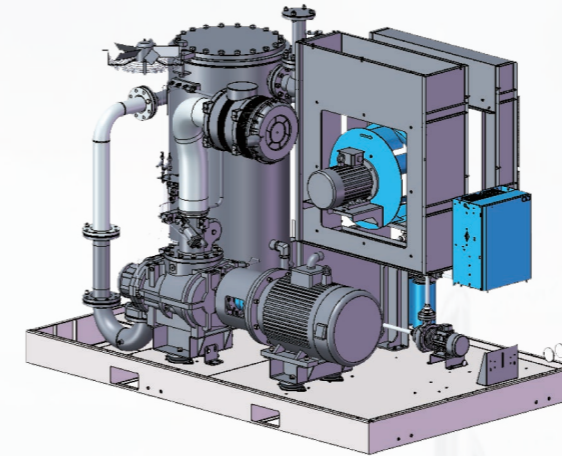
型号 Model	电动机功率 Electric motor power	电压/频率 Voltage/ Frequency	额定压力 Rated pressure	排气量 Air discharge capacity FAD	额定转速 Rated speed	重量 Weight	外形尺寸(长×宽×高) Dimensions (L x W x H)	出口管径 Air discharge valve size
SELV 37S-1.5	37 kW	380 V/50 HZ	1.5 bar	13.9 m ³ /min	1850 RPM	2100 kg	2620×1535×2170 mm	DN80
SELV 55S-1.5	55 kW	380 V/50 HZ	1.5 bar	21.5 m ³ /min	1500 RPM	3200 kg	2900×1800×2090 mm	DN125
SELV 75S-1.5	75 kW	380 V/50 HZ	1.5 bar	29.8 m ³ /min	1500 RPM	3890 kg	3250×1980×2220 mm	DN150
SELV 90S-1.5	90 kW	380 V/50 HZ	1.5 bar	35.2 m ³ /min	1780 RPM	5100 kg	3660×2150×2430 mm	DN200
SELV 110S-1.5	110 kW	380 V/50 HZ	1.5 bar	46 m ³ /min	1500 RPM	7310 kg	4400×2250×2400 mm	DN250

全系列可定制10/13bar产品;电压、频率可根据用户供电定制。
The full range of 10/13 bar products can be customized, with the voltage and frequency customized as required by the customers.

产品特点 PRODUCT FEATURES

高效节能 超长寿命 高性价比

Efficient and energy-saving
/ Durable / High cost-effectiveness



01 大排量主机 Large Capacity Air End

◆采用高效大排量主机,大转子,转速低,效率高,噪音低,振动小,能耗低;
◆Use high efficient air end, large rotor, low rpm, low noise, low vibration, low energy consumption;

02 永磁电机 Permanent magnet motor

◆采用全新一代永磁变频电机,并放大余量设计,超一级能效,独立冷却风机,使电机散热不受变频调速影响,选用耐高温永磁体,耐温180°C不消磁。
◆Adopt a new generation of permanent magnetic variable frequency motor and designed with large margin, super great energy efficiency, independent cooling fan, so that the motor cooling is not affected by variable-frequency speed regulation, choose high temperature resistant permanent magnet, temperature resistance ups to 180°C without demagnetization.

03 控制系统 Control System

◆采用先进的微电脑控制驱动系统实现智能控制、变速控制气量自动调节。
◆Advanced microcomputer control drive system is adopted to realize intelligent control and variable speed control air flow automatically.

05 进气系统 Air Intake System

◆采用独特的进气系统及高品质定制空滤,确保进入机头的空气质量,延长主机寿命。
◆Unique air intake system and high quality customized air filter to ensure the quality of air intake and extend the service life of the air compressor.

06 冷却系统 Cooling System

◆冷却器采用压板式固定,避免热膨胀引起接触面拉扯导致冷却器损坏与漏油等现象,延长使用寿命;
◆The cooler is fixed with mounting plate, which avoids damage or oil leakage caused by stress in the contact area caused by thermal expansion, and prolongs the service life of the cooler;
◆离心风机+永磁变频,风扇噪音低,并可根据不同工况自动调节电机转速,能耗低的同时降低噪音。
◆Centrifugal fan + permanent magnet frequency conversion, automatically adjust the fan motor rpm, which consume lower energy and reduce noise.

07 油气分离 Oil Air Separation System

◆采用超大容量油气分离器,及品质优越的油气分离元件,保证了压缩空气的高质量要求;
◆Large capacity separator with premium element, to ensure the high quality compressed air;

适用工况 WORKING CONDITIONS

- | | |
|--------------------------------------|------------------------|
| 重、轻工业
Heavy and light industry | 矿山
Mining industry |
| 水电
Water resource and hydro power | 军工
Defense industry |
| 船舶制造
Ship building | 海港
Seaport |
| 能源
Energy industry | 工程建设
Construction |



SELV·S-3bar | 电动/变频/螺杆空气压缩机/单级压缩/额定压力3bar
Electrical / Various frequency / Screw air compressor / Single-stage compression / Rated pressure 3 bar

功率范围 Power range:
37 kW - 160 kW



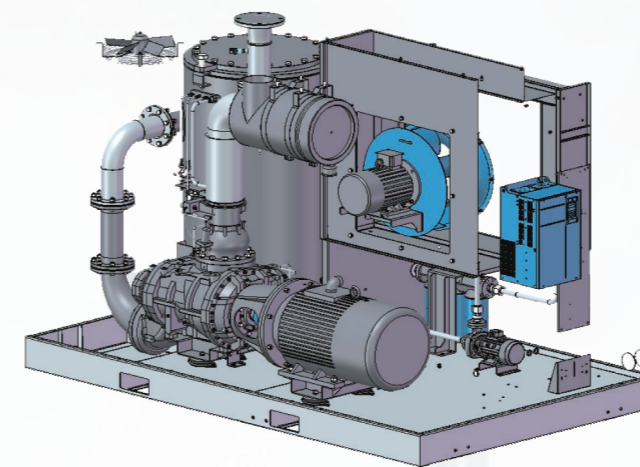
型号 Model	电动机功率 Electric motor power	电压/频率 Voltage/ Frequency	额定压力 Rated pressure	排气量 Air discharge capacity FAD	额定转速 Rated speed	重量 Weight	外形尺寸(长×宽×高) Dimensions (L x W x H)	出口管径 Air discharge valve size
SELV 37S-3	37 kW	380 V/50 HZ	3 bar	10.4 m ³ /min	3000 RPM	1920 kg	2620×1535×2170 mm	DN80
SELV 55S-3	55 kW	380 V/50 HZ	3 bar	17.2 m ³ /min	1500 RPM	2880 kg	2900×1800×2090 mm	DN125
SELV 75S-3	75 kW	380 V/50 HZ	3 bar	23.5 m ³ /min	1500 RPM	3045 kg	2900×1800×2090 mm	DN125
SELV 90S-3	90 kW	380 V/50 HZ	3 bar	30.3 m ³ /min	1500 RPM	3965 kg	3250×1980×2220 mm	DN150
SELV 110S-3	110 kW	380 V/50 HZ	3 bar	36 m ³ /min	1800 RPM	4200 kg	3250×1980×2220 mm	DN150
SELV 132S-3	132 kW	380 V/50 HZ	3 bar	46.8 m ³ /min	1500 RPM	6000 kg	3660×2150×2430 mm	DN200
SELV 160S-3	160 kW	380 V/50 HZ	3 bar	55 m ³ /min	1850 RPM	6100 kg	3660×2150×2430 mm	DN250

全系列可定制10/13bar产品;电压、频率可根据用户供电定制。
The full range of 10/13 bar products can be customized, with the voltage and frequency customized as required by the customers.

产品特点 PRODUCT FEATURES

高效节能 超长寿命 高性价比

Efficient and energy-saving / Durable / High cost-effectiveness



01 大排量主机 Large Capacity Air End

◆采用高效大排量主机,大转子,转速低,效率高,噪音低,振动小,能耗低;
◆High efficient large air end, large rotor, low speed, low noise, low vibration, low energy consumption;

02 高效电机 Efficient Motor

◆离心风机+永磁变频,风扇噪音低,根据不同工况自动调节电机转速,能耗降低的同时,降低噪音;
◆Centrifugal fan + permanent magnet frequency conversion, automatically adjust the fan motor rpm, which consume lower energy and reduce noise;

03 控制系统 Control System

◆采用先进的微电脑控制驱动系统实现智能控制、变速控制气量自动调节。
◆Advanced microcomputer control drive system is adopted to realize intelligent control and variable speed control air flow automatically.

04 双变频一体控制 Dual Mode Frequency Conversion Integrated Control

◆双变频一体控制,线路简单操作便捷,在保持原有电机变频特点外,增加了对散热风机的控制精准度,让设备的散热系统在各种温度环境下也可以稳定工作;
◆Dual mode frequency conversion integrated control simplifies circuits, increases the control accuracy of the cooling fan, and enables the air compressor to work smoothly in various temperatures;

05 进气系统 Air Intake System

◆采用独特的进气系统及高品质定制空滤,确保进入机头的空气质量,延长主机寿命。
◆Unique air intake system and high quality customized air filter to ensure the quality of air intake and extend the service life of the air compressor.

06 冷却系统 Cooling System

◆冷却器采用压板式固定,避免热膨胀引起接触面拉扯导致冷却器损坏与漏油等现象,延长使用寿命;
◆The cooler is fixed with mounting plate, which avoids damage or oil leakage caused by stress in the contact area caused by thermal expansion, and prolongs the service life of the cooler;

07 油气分离 Oil Air Separation

◆采用超大容量油气分离器,及品质优越的油气分离元件,保证了压缩空气的高质量要求;
◆Large capacity separator with premium element, to ensure the high quality compressed air;

适用工况 WORKING CONDITIONS

- | | |
|--------------------------------------|------------------------|
| 重、轻工业
Heavy and light industry | 矿山
Mining industry |
| 水电
Water resource and hydro power | 军工
Defense industry |
| 船舶制造
Ship building | 海港
Seaport |
| 能源
Energy industry | 工程建设
Construction |



应用案例一 Application 1

应用案例二 Application 2

SOGV·S-16bar | 电动/变频/激光切割专用/单级压缩/额定压力3bar
Electrical / Various frequency / Laser cutting application dedicated / Single-stage compression / Rated pressure 16 bar

功率范围 Power range:
15 kW - 22 kW



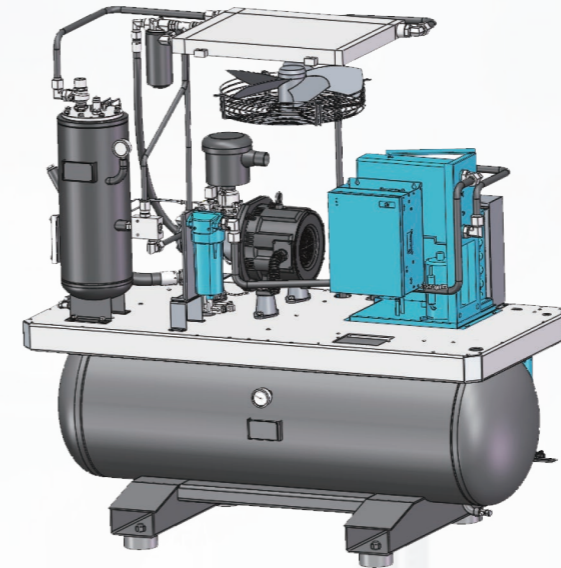
型号 Model	电动机功率 Electric motor power	电压/频率 Voltage/ Frequency	额定压力 Rated pressure	排气量 Air discharge capacity FAD	额定转速 Rated speed	重量 Weight	外形尺寸(长×宽×高) Dimensions (L x W x H)	出口管径 Air discharge valve size
SOGV15S-16	15 kW	380 V/50 HZ	16 bar	1.2 m ³ /min	2550 RPM	565 kg	1600x860x1675 mm	DN20 (R3/4")
SOGV22S-16	22 kW	380 V/50 HZ	16 bar	2.2 m ³ /min	3600 RPM	665 kg	1800x880x1875 mm	DN25 (R1")

全系列可定制10/13bar产品;电压、频率可根据用户供电定制。
The full range of 10/13 bar products can be customized, with the voltage and frequency customized as required by the customers.

产品特点 PRODUCT FEATURES

高效节能 超长寿命 高性价比

Efficient and energy-saving / Durable / High cost-effectiveness



01 6轴承螺杆主机 6-Bearing Screw Air End

◆配置重载6轴承螺杆主机,使主机运转稳定,整机寿命大大的增加;
◆Equipped with heavy duty 6 bearing screw air end, which makes the air compressor running stably and the service life is greatly increased;

02 冷冻式干燥机 Freeze Dryer

◆采用高效冷冻式干燥机和4级高效精密过滤器,确保获得纯净的压缩空气,压力露点低至-2-10°C;
◆Adopts high efficient freeze dryer and 4-stage high efficient and precise filter to ensure access to pure compressed air, pressure dew point as low as 2-10°C;

03 高性能温控阀 High Performance Thermostat Valve

◆该系列机型配置高性能温控阀有效的避免了螺杆油乳化现象。
◆Equipped with high performance temperature control valve effectively avoid the phenomenon of emulsification of compressor oil.

04 大容量储气罐 High-capacity Receiver Tank

◆超大容量储气罐,更节能省电,加厚材质,缓冲、降温、除水,稳定气压;
◆Large capacity receiver tank, more energy-efficient and power-saving, thickened material, damping, cooling, dewatering, and stable air pressure;

05 一体化设计 High-capacity Receiver Tank

◆一体化设计,安装方便,省去自配储气罐、冷干机过滤的麻烦,省去接管安装的麻烦,接电即可使用。
◆Integrated design and easy installation avoid the inconvenience of self-equipped receiver tank and freeze dryer filtering and piping installation. It can be used instantly after power-up.

适用工况 WORKING CONDITIONS

激光设备 Laser Equipment Industry	喷涂喷漆 Spray Painting Industry
金属制品 Metalwork Industry	石油化工 Petrochemical Industry
船舶制造 Ship building	汽修行业 Auto Maintenance Industry
能源 Energy industry	精密机械 Precision Machinery Industry

