



ZEGA露天分体钻机/工程螺杆机

ZEGA separated surface drill rig/ screw air compressor for construction applications



•产品列入国家火炬计划
•Listed in China National "Torch Program"

•国家级高新技术企业
•National High Tech Enterprise

•中国履带式露天钻车行业标准制定单位
•Industry Standard Maker of China Crawler Surface Drill Rig

“国家专精特新小巨人”企业
National Level Specialized and Innovative Little Giant Enterprise

浙江志高机械股份有限公司保留最终解释权。

Zhejiang Zhigao Machinery Co.,Ltd. reserves the right of final interpretation.

2024.10.30

浙江志高机械股份有限公司

地址:浙江省衢州市衢江区百灵北路15号
国内销售热线:0570-8089522 / 3375599 / 3375666
海外销售热线:0570-3688903 / 3379118
传真:0570-3375621
邮箱:zgjx@zhigaojx.com
网址:www.zhigaojx.com

Zhejiang Zhigao Machinery Co.,Ltd.

Add: No.15 North Bailing Avenue, Qujiang District, Quzhou City, Zhejiang Province, China
Domestic Sales Hotline: +86-570-8089522 / 3375599 / 3375666
Overseas Sales Hotline: +86-570-3688903 / 3379118
Fax:+86-570-3375621
E-mail: zgjx@zhigaojx.com
Http: www.zhigaojx.com



科技创新无限 志高掘进先锋
ZEGA,drilling pioneer for infinite scientific and technology innovation.



■ 浙江志高机械股份有限公司是一家从事系列空气压缩机和凿岩设备的研究开发、生产销售和应用服务的专业厂家。产品广泛应用于工业气源、各类矿山开采和工程项目建设。企业以技术开发为核心，秉承“重细节、求高效、铸品质、创未来”的行动纲领，以“科技创新无限，志高掘进先锋”为经营理念。放眼全球，用争创世界一流的信心为客户提供产品和服务，为推动行业技术进步和节能环保事业而努力前行！

■ Zhejiang Zhigao Machinery Co., Ltd. is a professional manufacturer engaged in the research and development, production, marketing and application services of full range of air compressors and rock drilling equipment. Products are widely used in industrial compressed air sources, various types of mining and civil engineering construction. With technological innovation as the core, Zhigao establishes its guiding principle of "emphasizing details, seeking efficiency, based on quality, and striving for the brighter future", and adheres to business philosophy of "continuous improvement and pursuit of perfection". Zhigao is serving the global market with world-class products to create value for customers and work hard to promote industry technological progress, energy conservation and environmental protection.

志存高远, 持之以恒!
Aim high and persevere!

21年累计 Accumulated over 21 years

Sales of drilling rigs (in units)
 销售凿岩钻机
26,500
 台

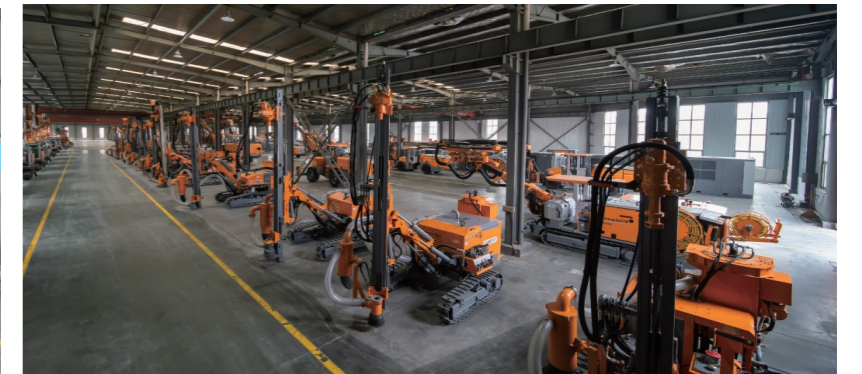
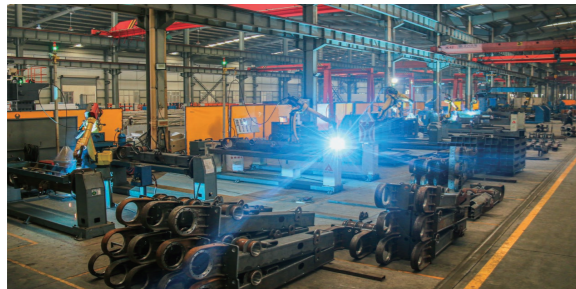
Sales of air compressor (in units)
 销售空气压缩机
165,500
 台

Effective national patents
 国家有效专利
91
 项

精工制造

LEAN Manufacturing

志高机械**第一工业园**，坐落于百灵北路15号，占地面积14.7万m²，建筑面积达11.1万m²，负责各种凿岩设备、空气压缩机的研发及生产。Zhigao Machinery First Industrial Park is located at No. 15 North Bailing Avenue, covering an area of 147000 square meters and a building area of 111000 square meters. It's responsible for the research and development and production of various rock drilling equipment and air compressors.



ZEGA 工程露天分体钻机

ZEGA Separated Surface Drill Rig



潜孔钻

DTH Drill Rig

ZEGA D335 / ZEGA D345 / ZEGA D355



锚固钻

Anchor Drill Rig

ZEGA A360 / ZEGA A370 / ZEGA A380



光伏钻

Photovoltaic Panel Foundation Drill Rig

ZEGA P375 / ZEGA P385 / ZEGA P395



水井钻

Water Well Drill Rig

ZEGA W385 / ZEGA W3115

ZEGA露天钻机系列命名原则

ZEGA Surface Drill Naming Principle



第一位数字表示产品分类系列

The first digit represents the product category series

- 3** = 履带式分体潜孔钻机
Crawler Installed Separated DTH Drill
- 4** = 全自动一体式潜孔钻机
Auto Integrated DTH Drill
- 5** = 小型一体式钻机
Small Integrated Drilling Rig
- 6** = 全自动一体式顶锤钻机
Auto Integrated Tophammer Drill
- 7** = “预留”给新产品
"Reserved" for new products
- 8** = 全自动牙轮钻机
Auto Rotary Drill

志高机械国际标准产品系列

Zhigao Machinery International Standard Product Series

ZEGA

字母表示凿岩方法 The letter stands the drilling method

- A** = 锚固 Anchor, 用首字母 **A** 表示;
- D** = 潜孔 Down the hole hammer, 用首字母 **D** 表示;
- P** = 光伏 Photovoltaic Panel Foundation, 用首字母 **P** 表示;
- R** = 牙轮 Rotary, 用首字母 **R** 表示;
- T** = 顶锤 Top hammer, 用首字母 **T** 表示;
- W** = 水井 Water Well, 用首字母 **W** 表示;

产品升级代际 The product upgrading principles are as follows::

- 第一代产品无后缀字母; The 1st generation of products has no suffix letters;
- 第二代产品后缀为“A”; The 2nd generation of products has suffix letters of “A”;
- 第三代产品后缀为“B”; The 3rd generation of products has suffix letters of “B”;

.....
第五代产品后缀为“D”; 以此类推。

The 5th generation of products has suffix letters of “D”.

D355C

第二位和第三位数字表示: 最佳钻孔孔径的英寸值的10倍数
The 2nd and 3rd digits stand 10 times the inch value of the optimum hole diameter

| 主要技术规格 Main Specifications | ZEGA D335 | ZEGA D345 | ZEGA D355 |
|-------------------------------------|----------------------------------|----------------------------------|----------------------|
| 推进方式 Feeding method | 油缸链条式 Hydraulic cylinder + chain | 油缸链条式 Hydraulic cylinder + chain | 马达链条式 Motor-chain |
| 推进器总长度 Feed total length | 5,500 mm | 5,880 mm | 5,930 mm |
| 推进补偿 Feed extension | 970 mm | 970 mm | 1,220 mm |
| 推进行程 Feed travel length | 3,670 mm | 3,670 mm | 3,875 mm |
| 最大推进力 Feed force max. | 15 kN | 20 kN | 15-25 kN |
| 最大推进速度 Feed speed max. | 26 m/min | 26 m/min | 30 m/min |
| 最大拉拔力 Pullback force max. | 25 kN | 45 kN | 25 kN |
| 孔径范围 Hole range | Φ90-115 mm | Φ90-138 mm | Φ115-165 mm |
| 最大孔深 Hole depth max. | 30 m | 30 m | 30 m |
| 钻杆规格 Drill pipe | Φ60 mm x 3 m | Φ76 mm x 3 m | Φ76 mm x 3 m |
| 冲击器 Hammer | 3.5" | 4" | 4"/5" |
| 回转扭矩 Rotation torque | 2,200 N·m | 3,200 N·m | 3,500 N·m |
| 回转速度 Rotation speed | 0-150 rpm | 0-100 rpm | “低 L”65/“高 H”95 rpm |
| 燃油箱容量 Fuel tank capacity | 70 L | 80 L | 156 L |
| 最大行走速度 Tramping speed max. | 2.5 km/h | 2.5 km/h | 3 km/h |
| 最大爬坡能力 Gradeability max. | 25° | 25° | 25° |
| 离地间隙 Ground clearance | 310 mm | 300 mm | 350 mm |
| 履带架摆动 Track frame oscillation angle | ±10° | ±10° | ±10° |
| 最大驱动力 Traction force max. | 40 kN | 54 kN | 59 kN |
| 重量(不含选配件) Weight (w/o Options) | 4,620 | 6,230 | 7,460 |
| 外形尺寸 Dimensions (LxWxH) | 5,700×2,130×2,300 mm | 7,000×2,250×2,700 mm | 7,000×2,300×2,800 mm |

产品特点 / Product Features

■ 配置工程单筋履带, 柱塞马达及调平功能, 适应各工况越野需求。其中D355标配双速行走马达, 爬坡能力更强, 能更好地适应露天矿山的复杂地质和路面环境; 操作台底座集中控制, 操作方便, 提高工作效率的同时, 增加了安全性和舒适性。D345配置双工位活动式行走操作台, 行走视线更好; 采用双摆线马达回转头, 扭矩大, 转速快, 满足不同岩层的钻孔要求; 强大的多功能钻臂关节, 能够满足垂直孔、低位水平孔等各种施工要求; 配置大容量的粗滤桶和集尘箱, 结合志高公司自行研发的干式除尘系统, 达到更高环保要求; 高压铸铁油泵使得钻机的系统爆发力和稳定性更强; 拥有稳定可靠的液压系统, 大幅降低能耗。

■ This series of separated DTH drill rigs are equipped with single-grouser track, hydraulic piston driven motor and oscillation frame. ZEGA D355 configured with the dual-speed tramping motor as standard, which greatly achieves the gradeability and is more suitable for complicated terrains of surface mines; centralized operator's console, facilitating the operation efficiency, safety and comfort. D345 equipped with a double-station movable tramping console, which makes the operator's sight better; rotary head driven by the dual cycloid motor, with large torque and high rotation rpm, ZEGA D345 is capable to satisfy drilling requirements of various rock formations; powerful multi-functional drill boom joints enable ZEGA D345 to drill vertical holes and bottom horizontal holes; enlarged pre-separator and dust collector with large capacity, which were independently developed by ZHIGAO is in compliance with global environmental regulations; High-pressure hydraulic oil pump contribute stable and reliable hydraulic system in turn it greatly reduces energy consumption.

适用工况 / Working conditions

■ 该系列分体式潜孔钻机, 主要面向小型采石场、水泥矿山、露天煤矿作业、大型露天矿山的前期场地整理, 以及修路、房地产等基础设施建设应用。配置3.5或4英寸冲击器, 主打Φ90mm、Φ115mm、Φ138mm孔径, 钻孔效率高, 集尘效果优。具有灵活机动的特点, 特别适用于小工作面的施工, 产品广泛应用于矿山及国防、交通、水利、石方等工程。

■ This series of separated DTH drill rigs had been mainly operating at small-sized quarries, cement mine, open-pit coal mines and preliminary site preparation for large-scale open-pit mines, as well as infrastructure construction for highways, real estate and other industries. Equipped with 3.5-inch or 4-inch hammers, the optimum hole ranges are Φ90mm, Φ115mm and Φ138mm with high drilling efficiency and outstanding dust collection performance. The flexibility and mobility of this series are especially suitable for the construction of restricted working areas, and have been successfully applied to mining and military projects, road construction, water conservancy, rock excavation and other applications, and have been widely recognized by customers at home and abroad.

ZEGA D335 分体式露天潜孔钻机 Separated DTH Surface Drill Rig

最佳孔径范围 Optimal Hole Range: Φ90-115 mm

配套空压机方案推荐 Recommended air compressors:

电移螺杆式空压机 Electrical Portable Screw Compressors: SPE460S-14.5

柴移螺杆式空压机 Diesel Portable Screw Compressors: SPD500S-12-15/SPD510D-15-18

| 发动机品牌 Engine manufacturer | 康明斯 Cummins | 康明斯 Cummins | 康明斯 Cummins |
|---------------------------|---------------|-----------------|---------------|
| 型号 Model | 4BTA3.9-C80 | QSB3.9-C80 | B3.9CS4-C80 |
| 排放标准 Emission standard | 国 II China II | 国 III China III | 国 IV China IV |
| 额定功率 Rated power | 60 kW (80 hp) | 60 kW (80 hp) | 60 kW (80 hp) |
| 转速 RPM | 2,200 rpm | 2,000 rpm | 2,500 rpm |



ZEGA D345 分体式露天潜孔钻机 Separated DTH Surface Drill Rig

最佳孔径范围 Optimal Hole Range: Φ90-138 mm

配套空压机方案推荐 Recommended air compressors:

电移螺杆式空压机 Electrical Portable Screw Compressors: SPE615D-19

柴移螺杆式空压机 Diesel Portable Screw Compressors: SPD670D-18-22 / SPD600D-15-18

| 发动机品牌 Engine manufacturer | 康明斯 Cummins | 康明斯 Cummins | 康明斯 Cummins |
|---------------------------|---------------|-----------------|---------------|
| 型号 Model | 4BTA3.9-C80 | QSB3.9-C80 | B3.9CS4-C80 |
| 排放标准 Emission standards | 国 II China II | 国 III China III | 国 IV China IV |
| 额定功率 Rated power | 60 kW (80 hp) | 60 kW (80 hp) | 60 kW (80 hp) |
| 转速 RPM | 2,200 rpm | 2,000 rpm | 2,500 rpm |



ZEGA D355 分体式露天潜孔钻机 Separated DTH Surface Drill Rig

最佳孔径范围 Optimal Hole Range: Φ115-165 mm

配套空压机方案推荐 Recommended air compressors:

电移螺杆式空压机 Electrical Portable Screw Compressors: SPE680D-24

柴移螺杆式空压机 Diesel Portable Screw Compressors: SPD670D-18-22/SPD750-18-22

| 发动机品牌 Engine manufacturer | 康明斯 Cummins | 康明斯 Cummins | 康明斯 Cummins |
|---------------------------|----------------|-----------------|----------------|
| 型号 Model | 4BTA3.9-C100 | QSB3.9-C100 | B3.9CS4-C110 |
| 排放标准 Emission standards | 国 II China II | 国 III China III | 国 IV China IV |
| 额定功率 Rated power | 74 kW (100 hp) | 74 kW (100 hp) | 81 kW (110 hp) |
| 转速 RPM | 2,200 rpm | 2,400 rpm | 2,500 rpm |



应用一 Application 1

应用二 Application 2

应用三 Application 3

应用四 Application 4

| 主要技术规格 Main Specifications | ZEGA A360 | ZEGA A370 | ZEGA A380 |
|-------------------------------------|----------------------------------|----------------------------------|----------------------------------|
| 推进方式 Feeding method | 油缸链条式 Hydraulic cylinder + chain | 油缸链条式 Hydraulic cylinder + chain | 油缸链条式 Hydraulic cylinder + chain |
| 推进器总长度 Feed total length | 5,880 mm | 6,050 mm | 7,140 mm |
| 推进补偿 Feed extension | 970 mm | 970 mm | 1,220 mm |
| 推进行程 Feed travel length | 3,670 mm | 3,670 mm | 3,825 mm |
| 最大推进力 Feed force max. | 35 kN | 35 kN | 35 kN |
| 最大推进速度 Feed speed max. | 26 m/min | 26 m/min | 30 m/min |
| 最大拉拔力 Pullback force max. | 80 kN | 80 kN | 80 kN |
| 孔径范围 Hole range | Φ90-178 mm | Φ110-203 mm | Φ110-350 mm |
| 最大孔深 Hole depth max. | 60 m | 60 m | 60 m |
| 钻杆规格 Drill pipe | Φ76 mm x 3 m | Φ76 mm x 3 m | Φ76 mm x 3 m |
| 冲击器 Hammer | 3.5"/4"/5"/6" | 4"/5"/6"/7" | 5"/6"/7"/8"/10" |
| 回转扭矩 Rotation torque | 5,000 N·m | 5,600 N·m | 8,000 N·m |
| 回转速度 Rotation speed | “低 L” 60/“高 H” 140 rpm | “低 L” 60/“高 H” 160 rpm | “低 L” 70/“高 H” 140 rpm |
| 燃油箱容量 Fuel tank capacity | 70 L | 105 L | 105 L |
| 最大行走速度 Tramping speed max. | 2.5 km/h | 2.5 km/h | 3 km/h |
| 最大爬坡能力 Gradeability max. | 25° | 25° | 25° |
| 离地间隙 Ground clearance | 310 mm | 300 mm | 300 mm |
| 履带架摆动 Track frame oscillation angle | ±10° | ±10° | ±10° |
| 最大驱动力 Traction force max. | 54 kN | 54 kN | 54 kN |
| 重量(不含选配件) Weight (w/o Options) | 5,510 | 7,080 | 6,870 |
| 外形尺寸 Dimensions (LxWxH) | 6,500×2,280×2,400 mm | 6,900×2,270×2,210 mm | 7,300×2,280×3,000 mm |

产品特点 / Product Features

■ 该型钻机配套动力标准为柴电双动力设计,可随时动力切换作业,通常在有电源工况使用电动,无电源工况使用柴动进行施工。采用大扭矩双摆线马达带动回转头,最大扭矩可达8000N.m,凿岩孔径范围大,可广泛适用于基坑锚杆跟管、大孔径麻花钻杆作业;回转双速切换阀操作方便,可满足不同扭矩和回转速度的作业需要;工程履带,标配柱塞马达,爬坡更有力、质量更可靠;A380配备卷扬起吊结构,满足工地对钢筋笼等物品的起吊需求,A370配备卸钎(管)器,满足用户特殊需求,增加钻臂工作范围,可满足垂直孔、水平孔位多工况要求;推进系统使用滚子链条油缸推进,结构可靠、推进提升力大。

■ This type of drilling rig is designed with diesel-electric dual power drive mode, and the drive mode can be switched at any time. In general, the electric drive is used on the construction site where the power supply is available, and only when there is no power supply, the diesel engine drive mode is switched. The rotary head driven by the large torque dual cycloid motor provides maximum torque of 8000N.m, which makes it have the ability to drill large-diameter holes, and can be widely used in foundation pit anchoring, casing, and large-diameter twist bit drilling operations; rotation dual-speed switching valve is easy to operate, meeting construction requirements of various torques and rotation speed; construction-grade tracks and piston motors as standard improve the gradeability and reliability; equipped with winch hoisting mechanism, A380 satisfies the hoisting requirements of reinforcement cages and other items at site; equipped with rod removal device, A370 satisfies special needs of users: improving boom working coverage, achieving vertical and horizontal drilling; The feeding method of roller chain - hydraulic cylinder is of great reliability and provides large pullback force.

适用工况 / Working conditions

■ 该系列锚固钻机主要用于滑坡及危岩体锚固工程,特别适合边坡岩体锚固工程。此外,它还适用于城市深基坑支护、抗浮锚杆及地基灌浆加固工程孔、爆破工程的爆破孔、高压旋喷桩、隧道管棚支护等多种施工场景。通过调整动力头,锚固钻机可以方便地进行全方位施工,满足多种工程需求。狭小空间可定制短推进梁。

■ This series of anchoring drill rigs are mainly used in landslides and dangerous rock body reinforcement, especially suitable for side slope rocks anchoring. Besides, they have been widely applied in urban deep foundation pits support, and anti-floating anchors, foundation grouting holes, blastholes, high-pressure jet grouting piles and tunnel pipe shed support construction and other applications. The anchoring drill rig is capable of conveniently operating in all directions through adjusting the rotary head to meet various construction requirements. Shorter feed beams can be customized to fit constructions in confined spaces

ZEGA A360 分体式锚固钻机 Separated Anchor Drill Rig

最佳孔径范围 Optimal Hole Range: Φ90-178 mm

配套空压机方案推荐 Recommended air compressors:

电移螺杆式空压机 Electrical Portable Screw Compressors: SPE680D-24

柴移螺杆式空压机 Diesel Portable Screw Compressors: SPD670D-18-22/SPD750D-18-22

| 发动机品牌 Engine manufacturer | 康明斯 Cummins | 康明斯 Cummins | 康明斯 Cummins |
|---------------------------|-------------------------------|-----------------|---------------|
| 型号 Model | 4BTA3.9-C80 | QSB3.9-C80 | B3.9CS4-C80 |
| 排放标准 Emission standard | 国 II China II | 国 III China III | 国 IV China IV |
| 额定功率 Rated power | 60 kW (80 hp) | 60 kW (80 hp) | 60 kW (80 hp) |
| 转速 RPM | 2,200 rpm | 2,000 rpm | 2,500 rpm |
| 电动机 Electric motor | 55 kW / SF1.0 / 380 V / 50 HZ | | |

Note: Working voltage and frequency can be customized according to customer requirements



ZEGA A370 分体式锚固钻机 Separated Anchor Drill Rig

最佳孔径范围 Optimal Hole Range: Φ 110-203 mm

配套空压机方案推荐 Recommended air compressors:

电移螺杆式空压机 Electrical Portable Screw Compressors: SPE850D-19

柴移螺杆式空压机 Diesel Portable Screw Compressors: SPD950D-18-25/SPD1050D-22-34

| 发动机品牌 Engine manufacturer | 康明斯 Cummins | 康明斯 Cummins | 康明斯 Cummins |
|---------------------------|-------------------------------|-----------------|----------------|
| 型号 Model | 4BTA3.9-C100 | QSB3.9-C100 | B3.9CS4-C110 |
| 排放标准 Emission standards | 国 II China II | 国 III China III | 国 IV China IV |
| 额定功率 Rated power | 74 kW (100 hp) | 74 kW (100 hp) | 81 kW (110 hp) |
| 转速 RPM | 2,200 rpm | 2,400 rpm | 2,500 rpm |
| 电动机 Electric motor | 55 kW / SF1.3 / 380 V / 50 HZ | | |

Note: Working voltage and frequency can be customized according to customer requirements



ZEGA A380 分体式锚固钻机 Separated Anchor Drill Rig

最佳孔径范围 Optimal Hole Range: Φ 110-350 mm

配套空压机方案推荐 Recommended air compressors:

电移螺杆式空压机 Electrical Portable Screw Compressors: SPE950D-24

柴移螺杆式空压机 Diesel Portable Screw Compressors: SPD1050D-22-34/SPD1590D-18-25

| 发动机品牌 Engine manufacturer | 康明斯 Cummins | 康明斯 Cummins | 康明斯 Cummins |
|---------------------------|-------------------------------|-----------------|----------------|
| 型号 Model | 4BTA3.9-C100 | QSB3.9-C100 | B3.9CS4-C110 |
| 排放标准 Emission standards | 国 II China II | 国 III China III | 国 IV China IV |
| 额定功率 Rated power | 74 kW (100 hp) | 74 kW (100 hp) | 81 kW (110 hp) |
| 转速 RPM | 2,200 rpm | 2,400 rpm | 2,500 rpm |
| 电动机 Electric motor | 55 kW / SF1.3 / 380 V / 50 HZ | | |

Note: Working voltage and frequency can be customized according to customer requirements



| 主要技术规格 Main Specifications | ZEGA P375 | ZEGA P385 | ZEGA P395 |
|-------------------------------------|-------------------------------------|---|---|
| 推进方式 Feeding method | 油缸链条式 Hydraulic cylinder + chain | 马达链条式 Motor-chain | 油缸链条式 Hydraulic cylinder + chain |
| 推进器总长度 Feed total length | 5,880 mm | 6,050 mm | 4,660 mm |
| 推进补偿 Feed extension | 970 mm | 1,220 mm | 970 mm |
| 推进行程 Feed travel length | 3,670 mm | 3,875 mm | 2,680 mm |
| 最大推进力 Feed force max. | 20 kN | 25 kN | 20 kN |
| 最大推进速度 Feed speed max. | 30 m/min | 26 m/min | 30 m/min |
| 最大拉拔力 Pullback force max. | 45 kN | 45 kN | 45 kN |
| 孔径范围 Hole range | Φ110-250 mm | Φ110-350 mm | Φ110-350 mm |
| 最大孔深 Hole depth max. | 30-10 m | 30-10 m | 30-10 m |
| 钻杆规格 Drill pipe | Φ76/89 mm/麻花钻杆 Twist drill pipe | Φ76/89 mm/麻花钻杆 Twist drill pipe | Φ76/89 mm/麻花钻杆 Twist drill pipe |
| 钻杆长度 Drill length | 3 m | 3 m | 2 m |
| 冲击器 Hammer | 4"/5"/6"/7"/8"/麻花钻头 Twist drill bit | 4"/5"/6"/7"/8"/10"/麻花钻头 Twist drill bit | 4"/5"/6"/7"/8"/10"/麻花钻头 Twist drill bit |
| 回转扭矩 Rotation torque | 5,000 N·m | 8,000 N·m | 8,000 N·m |
| 回转速度 Rotation speed | “低 L”50/“高 H”70 rpm | “低 L”55/“高 H”110 rpm | “低 L”50/“高 H”60 rpm |
| 燃油箱容量 Fuel tank capacity | 70 L | 70 L | 70 L |
| 最大行走速度 Tramping speed max. | 3 km/h | 2.5 km/h | 3 km/h |
| 卷扬机 Winch | 6 T | / | 8 T |
| 最大爬坡能力 Gradeability max. | 25/35° | 25° | 25/35° |
| 离地间隙 Ground clearance | 310 mm | 310 mm | 310 mm |
| 履带架摆动 Track frame oscillation angle | ±10° | ±10° | ±10° |
| 最大驱动力 Traction force max. | 54 kN | 54 kN | 54 kN |
| 重量 (不含选配件) Weight (w/o Options) | 5,410 | 5,640 | 5,920 |
| 外形尺寸 Dimensions (LxWxH) | 5,590×2,308×2,500 mm | 7,000×2,280×2,700 mm | 6,000×2,308×2,500 mm |

产品特点 / Product Features

■ 配置工程单筋履带,柱塞马达及调平功能,配备液压绞车,行走驱动力更强,适应原始山地大坡度作业,增加了施工安全性;配置双马达回转头,回转扭矩大,推进回转快慢档功能可满足客户软岩层高速钻孔的需求;拥有稳定可靠的液压系统,可大幅降低能耗;高压铸铁油泵使得钻机的系统爆发力更强;推进系统采用油缸加滚子链结构;加强的钻臂结构设计使得钻机能应对超大孔径。

■ This series of separated DTH drill rigs are equipped with construction single-grouser tracks, piston motors and oscillation function, greatly improves the tramping traction force and equipped with hydraulic winch to adapt to complex mountainous and large-slope drilling operations, which greatly increases safety; The rotary head driven by dual motors, large rotation torque, fast and slow gears for feed and rotation satisfy requirements for higher penetration rate in soft rock formations; The stable and reliable hydraulic system greatly cuts down the energy consumption; the feeding method adopts hydraulic cylinder - roller chain; The updated drill boom design enables the drill rig to cope with super-large holes.

适用工况 / Working conditions

■ 该系列分体式光伏孔钻机,主要用于光伏桩孔和其他孔径要求大、深度较浅的非爆破孔,可分别选用冲击器配冲击钻头或麻花钻杆配麻花钻头,也可用于采石场、水泥矿山、露天煤矿等各类矿山,主打165-350孔径,钻孔效率高,适用范围广等特点,是一款深受用户欢迎的理想凿岩设备。

■ This series of PV panel foundation drill rigs are mainly used for drilling foundation holes, as well as other non-blasting holes with large diameter and shallow depth. There are two types of drilling: impact hammer with impact drill bit, or twist drill pipe with twist drill bit. It can also be used in quarries, cement mines, open-pit coal mines and other mines, drilling 165-350mm diameter holes, with high drilling efficiency, wide range of application, is a popular rock drilling equipment for users at home and abroad.

ZEGA P375 分体式露天光伏钻机 Separated Surface Photovoltaic Foundation Drill Rig

最佳孔径范围 Optimal Hole Range: Φ 110-250 mm

配套空压机方案推荐 Recommended air compressors:

电移螺杆式空压机 Electrical Portable Screw Compressors: SPE850D-19

柴移螺杆式空压机 Diesel Portable Screw Compressors: SPD750D-18-22/SPD1050D-22-34

| 发动机品牌 Engine manufacturer | 康明斯 Cummins | 康明斯 Cummins | 康明斯 Cummins |
|---------------------------|----------------|-----------------|----------------|
| 型号 Model | 4BTA3.9-C100 | QSB3.9-C100 | B3.9CS4-C110 |
| 排放标准 Emission standard | 国 II China II | 国 III China III | 国 IV China IV |
| 额定功率 Rated power | 74 kW (100 hp) | 74 kW (100 hp) | 81 kW (110 hp) |
| 转速 RPM | 2,200 rpm | 2,400 rpm | 2,500 rpm |



ZEGA P385 分体式露天光伏钻机 Separated Surface Photovoltaic Foundation Drill Rig

最佳孔径范围 Optimal Hole Range: Φ 110-350 mm

配套空压机方案推荐 Recommended air compressors:

电移螺杆式空压机 Electrical Portable Screw Compressors: SPE1100D-18

柴移螺杆式空压机 Diesel Portable Screw Compressors: SPD1050D-22-34/SPD1400D-25-34

| 发动机品牌 Engine manufacturer | 康明斯 Cummins | 康明斯 Cummins | 康明斯 Cummins |
|---------------------------|----------------|-----------------|----------------|
| 型号 Model | 4BTA3.9-C100 | QSB3.9-C100 | B3.9CS4-C110 |
| 排放标准 Emission standards | 国 II China II | 国 III China III | 国 IV China IV |
| 额定功率 Rated power | 74 kW (100 hp) | 74 kW (100 hp) | 81 kW (110 hp) |
| 转速 RPM | 2,200 rpm | 2,400 rpm | 2,500 rpm |



ZEGA P395 分体式露天光伏钻机 Separated Surface Photovoltaic Foundation Drill Rig

最佳孔径范围 Optimal Hole Range: Φ 110-350 mm

配套空压机方案推荐 Recommended air compressors:

电移螺杆式空压机 Electrical Portable Screw Compressors: SPE1250-18

柴移螺杆式空压机 Diesel Portable Screw Compressors: SPD1400D-25-34/SPD1590-18-25

| 发动机品牌 Engine manufacturer | 康明斯 Cummins | 康明斯 Cummins | 康明斯 Cummins |
|---------------------------|----------------|-----------------|----------------|
| 型号 Model | 4BTA3.9-C100 | QSB3.9-C100 | B3.9CS4-C110 |
| 排放标准 Emission standards | 国 II China II | 国 III China III | 国 IV China IV |
| 额定功率 Rated power | 74 kW (100 hp) | 74 kW (100 hp) | 81 kW (110 hp) |
| 转速 RPM | 2,200 rpm | 2,400 rpm | 2,500 rpm |



| 主要技术规格 Main Specifications | ZEGA W385 | ZEGA W3115 |
|---------------------------------|----------------------------------|----------------------------------|
| 推进方式 Feeding method | 油缸链条式 Hydraulic cylinder + chain | 油缸链条式 Hydraulic cylinder + chain |
| 推进器总长度 Feed total length | 5,470 mm | 5,470 mm |
| 推进行程 Feed travel length | 6,620 mm | 6,620 mm |
| 最大推进力 Feed force max. | 50 kN | 50 kN |
| 最大推进速度 Feed speed max. | 26 m/min | 26 m/min |
| 最大拉拔力 Pullback force max. | 120 kN | 130 kN |
| 孔径范围 Hole range | Φ110-250 mm | Φ110-350 mm |
| 最大孔深 Hole depth max. | 300 m | 400 m |
| 回转扭矩 Rotation torque | 7,500 N·m | 9,500 N·m |
| 回转速度 Rotation speed | “低 L”30/“高 H”135 rpm | “低 L”30/“高 H”135 rpm |
| 燃油箱容量 Fuel tank capacity | 130 L | 130 L |
| 最大行走速度 Tramping speed max. | 3 km/h | 3 km/h |
| 最大爬坡能力 Gradeability max. | 25° | 25° |
| 离地间隙 Ground clearance | 256 mm | 256 mm |
| 最大驱动力 Traction force max. | 50 kN | 50 kN |
| 重量 (不含选配件) Weight (w/o Options) | 9,000 | 9,500 |
| 外形尺寸 Dimensions (LxWxH) | 5,500×2,200×2,560 mm | 5,500×2,200×2,560 mm |

产品特点 / Product Features

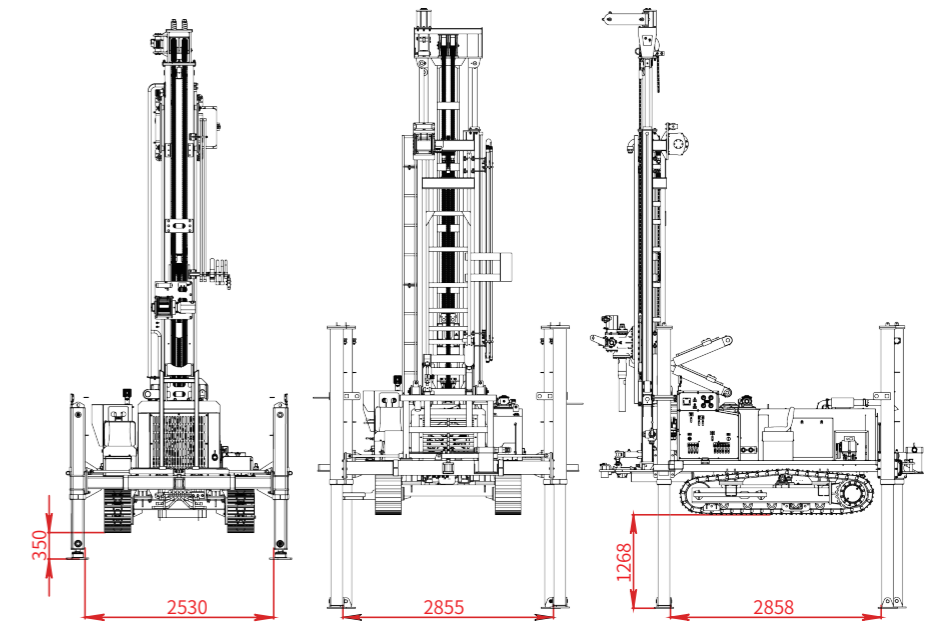
- 行走系统配备加宽履带，满足松软湿地的通过性，高支腿自带装卸车能力；采用带快慢档切换功能的大扭矩回转头，满足不同孔径和岩层要求；集中控制的操作系统，易于维护，方便机器操作；采用复合推进梁，运输体积小、行程长，双油缸设计提升力大、作业稳定可靠；先进的液压系统设计，维护简单，可靠性强。其中W3115回转动力头配备侧滑功能，使得吊装套管更为方便。
- The tramping system is equipped with widen track to achieve high adaptability on soft and wet lands, and high hydraulic jacks can serve to load and unload from trailer; the large torque rotary head with switching function between fast and slow gears satisfies various requirements on drilling holes and rock formations; the centralized controlled operation system is easy to maintain and convenient for operation; the composite feed beam with long travel length reduces the transport dimension and the design of dual hydraulic cylinders improves the pullback force, stability and reliability; advanced hydraulic system design simplifies the maintenance and improves the reliability. The rotary head of W3115 drill rig is equipped with side-move function, facilitating casing hoisting.

适用工况 / Working conditions

- 该系列水井钻是一种高效、多功能的水井钻井设备，可用于打水井、农灌井、地热井等各类井眼。特别适用于山区和岩层取水工程。适用于不同地层钻孔（岩石层、泥层、沙层），最大孔径可达350mm。
- This series of water well drill rigs are effective and versatile, widely used for drilling water wells, irrigation wells and geothermal wells, and other deephole applications, especially for water supply projects in mountainous areas and rock formations. These water well drill rigs are applicable to drilling in various rock formations (rock stratum, mud layer, sand bed), with maximum drilling holes of 350mm.

ZEGA W385 分体式水井钻机 Separated Water Drill Rig

最佳孔径范围 Optimal Hole Range: Φ 110-250 mm
 配套空压机方案推荐 Recommended air compressors:
 柴动螺杆式空压机 Diesel Screw Compressors:
 SPDB1050D-22-34/SPDB1400D-25-34



ZEGA W3115 分体式水井钻机 Separated Water Drill Rig

最佳孔径范围 Optimal Hole Range: Φ 110-350 mm
 配套空压机方案推荐 Recommended air compressors:
 柴动螺杆式空压机 Diesel Screw Compressors:
 SPDB1400D-25-34/SPDB1590D-18-25

| 发动机品牌 Engine manufacturer | 康明斯 Cummins | 康明斯 Cummins | 康明斯 Cummins |
|---------------------------|----------------|-----------------|----------------|
| 型号 Model | 4BTA3.9-C125 | QSB3.9-C125 | B3.9CS4-C125 |
| 排放标准 Emission standard | 国 II China II | 国 III China III | 国 IV China IV |
| 额定功率 Rated power | 93 kW (125 hp) | 93 kW (125 hp) | 93 kW (125 hp) |
| 转速 RPM | 2,200 rpm | 2,200 rpm | 2,500 rpm |



ZEGA 工程螺杆式空压机

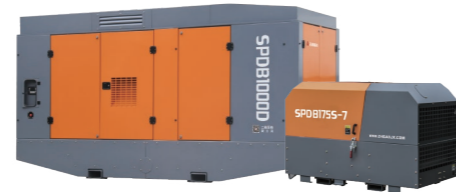
Construction Screw Air Compressor

 **柴油动力**
Diesel power



移动式 Portable

发动机功率范围 Engine power range: 36.8 kW~563 kW
 发动机品牌 Engine brands:
 玉柴 Yuchai/锡柴 Xichai/康明斯 Cummins
 排气量范围 Air discharge capacity FAD: 5 m³/min ~45 m³/min
 额定压力范围 Nominal pressure, max range: 7 bar~ 35 bar



固定撬装式 Box type

发动机功率范围 Engine power range: 36.8 kW~563 kW
 发动机品牌 Engine brands:
 玉柴 Yuchai/锡柴 Xichai/康明斯 Cummins
 排气量范围 Air discharge capacity FAD: 5 m³/min ~45 m³/min
 额定压力范围 Nominal pressure, max: 7 bar~ 35 bar

 **电动力**
Electric power



移动式 Portable

电动机功率范围 Electric motor power range: 15-315 kW
 电动机防护等级 Motor protection class: IP54
 排气量范围 Air discharge capacity FAD: 2.8 m³/min ~40 m³/min
 额定压力范围 Nominal pressure, max: 8 bar~ 24 bar



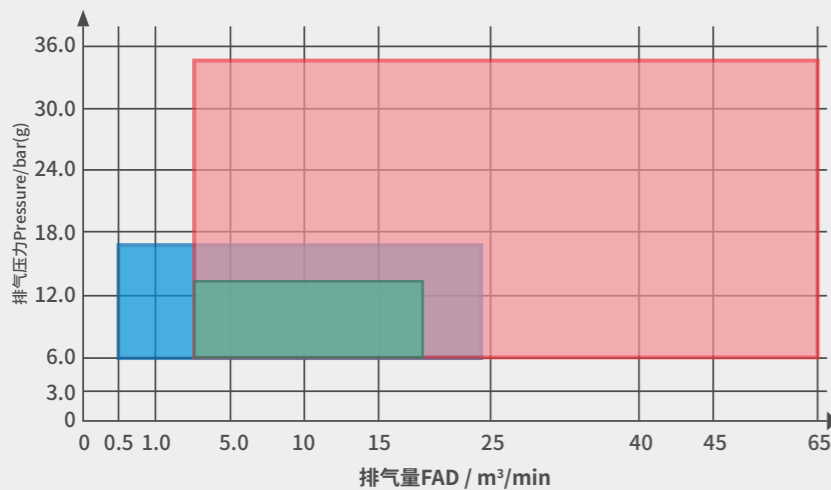
固定式 Stationary

电动机功率范围 Electric motor power range: 55-315 kW
 电动机防护等级 Motor protection class: IP54
 排气量范围 Air discharge capacity FAD: 9.8 m³/min ~61 m³/min
 额定压力范围 Nominal pressure, max: 8 bar

“螺杆主机”100% 自主研发+生产

“Screw Air End” through 100% independent research and development

志高螺杆主机功能覆盖图 Screw air end capacity coverage



高效的螺杆转子型线

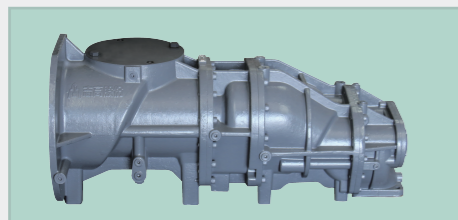
High-efficiency screw rotor profile

■ 志高螺杆主机转子采用公司自主研发的转子型线, 相对传统型线, 其具有更合理的泄漏三角形、更短的接触线、更小的排气封闭容积, 转子加工性能优越, 使得压缩机具有卓越的容积效率及绝热效率。

■ The self-developed rotor profile has a more reasonable leakage triangle, shorter contact line, and smaller discharge contained volume, excellent volumetric efficiency and thermal insulation efficiency.



二级压缩 Two stage



水平双级 Horizontal two-stage



单级压缩 Single stage

钻机的核心部件 —— 最优的加工制造保障

CORE COMPONENTS OF drill rig-with best manufacture process and fabrication technology.



 **进口加工中心**
Imported processing center

■ 壳体加工采用日本进口加工中心, 加工精度可达±0.005mm。
 ■ Housing machining adopts machining center imported from Japan, the accuracy can reach ±0.005mm.



 **进口磨床**
Imported grinder

■ 转子加工采用德国KAPP、英国霍洛伊德磨床, 加工精度可达±0.001mm。
 ■ The rotor machining adopts German KAPP and British Holroyd grinding machine, with the machining precision to be ±0.001mm.



 **进口检测三坐标**
Import inspection 3 coordinates

■ 转子和壳体检测采用德国进口徕斯三坐标测量仪。
 ■ The rotor and housing inspection adopts Leitz coordinate measuring instrument imported from Germany.



 **恒温无尘车间**
Dust free constant temperature workshop

■ 精湛的工艺流程和专用工装, 保证螺杆主机的装配质量。
 ■ Thorough workmanship and specialized tooling ensure the assembly quality of the screw air end.

ZEGA工程螺杆系列命名原则 1 2 3 - 4 5

ZEGA Construction Screw Air Compressor Naming Principle

| | | |
|----------|--|--|
| 1 | SPD 柴动移动螺杆空气压缩机 Diesel portable screw compressor | S 即:螺杆 Screw / P 即:移动 Portable / D 即:柴油机 Diesel Engine |
| | SPDB 柴动移动撬装螺杆空气压缩机 Diesel box type screw compressor | S 即:螺杆 Screw / P 即:移动 Portable / D 即:柴油机 Diesel Engine / B 即:移动机中带叉车槽的箱体式 Box type |
| | SPDC 柴动移动工程螺杆空气压缩机 Diesel portable construction screw compressor | S 即:螺杆 Screw / P 即:移动 Portable / D 即:柴油机 Diesel Engine / C 即:工程式 Construction |
| | SPE 电动移动螺杆空气压缩机 Electric portable screw compressor | S 即:螺杆 Screw / P 即:移动 Portable / E 即:电动机 Electric motor |
| | SSE 电动固定螺杆空气压缩机 Electric stationary screw compressor | S 即:螺杆 Screw / S 即:固定 Stationary / E 即:电动机 Electric Motor |

- 用国际认可的排气量CFM(每分钟立方英尺)来表示!
CFM x 0.0283 = m³/min 或 CFM/35.33 = m³/min
- 压缩等级 Compression stage
S代表 represents:单级压缩 Single-stage compression / **D**代表 represents:双级压缩 Dual-stage compression
- 额定压力 Nominal pressure, max
最高使用压力 Maximum operating pressure / 单位 UOM: bar
- V**代表 represents:变频 Variable frequency

例 1: SPDB 1035D-24 Example: SPDB 1035D-24 代表: 柴动移动撬装螺杆空气压缩机 / 1035CFM / 双级压缩 / 额定压力24bar
Means: Diesel box type screw compressor / 1035CFM / Tow-stage compression / Rated pressure 24bar

例 2: SSE 480S-8 Example: SSE 480S-8 代表: 电动固定螺杆空气压缩机 / 480CFM / 单级压缩 / 额定压力8bar
Means: Electric stationary screw compressor / 480CFM / Single-stage compression / Rated pressure 8bar

移动式/裸机/固定式螺杆空气压缩机 Portable & without frame or stationary, box type screw air compressor

| 主要技术规格 Main Specifications | SPD175S-7 | SPD280S-7 | SPD425S-7 | SPD350S-10 | SPDC175S-8 | SPDB175S-7 |
|-------------------------------|------------------------------|------------------------------|------------------------------|------------------------------|-------------------------------|-------------------------------|
| 油箱容量/Diesel tank volume | 65 L | 85 L | 180 L | 180 L | 50 L | 65 L |
| 额定排气量/Rated FAD | 5 m ³ /min | 8 m ³ /min | 12 m ³ /min | 10.5 m ³ /min | 4 m ³ /min | 5 m ³ /min |
| 额定压力/Nominal pressure, max | 7bar | 7bar | 7 bar | 10 bar | 8 bar | 7 bar |
| 机头/Air End | 一级压缩Single-stage compression | 一级压缩Single-stage compression | 一级压缩Single-stage compression | 一级压缩Single-stage compression | 一级压缩 Single-stage compression | 一级压缩 Single-stage compression |
| 形式/Type | 两轮 2 Wheel | 两轮 2 Wheel | 两轮 2 Wheel | 两轮 2 Wheel | 罐体 Air receiver tank | 固定 Utility truck installed |
| 重量/Weight | 860 kg | 1,200 kg | 1,900 kg | 1,900 kg | 730 kg | 750 kg |
| 外形尺寸/Dimensions (LxWxH) | 2,400x1,330 x1,550 mm | 2,700x1,600 x1,700 mm | 3,550x2,100 x2,170mm | 3,550x2,100 x2,170mm | 1,670x990 x1,550 mm | 1,800x1,040 x1,300 mm |
| 出口管径/Air Discharge Valve Size | G1" | G1-1/2" | G1-1/2" 和 G1" | G1-1/2" 和 G1" | G1" | G1" |

SPDC175S-8 柴动螺杆式空气压缩机 Diesel Screw Compressors

适用工况/ Working conditions

- 设备配套 Work with other equipment
- 风镐 Jack hammer
- 排渣吹孔 Cutting flushing & Hole blowing
- 风动凿岩机 Pneumatic rock drill

| | | | |
|---------------------------|---------------|-----------------|-----------------|
| 发动机品牌 Engine manufacturer | 锡柴 Xichai | 锡柴 Xichai | 锡柴 Xichai |
| 型号 Model | 4DW91-56G2 | 4DW91-50GBG3U | 4DW91-50GDG42 |
| 排放标准 Emission standard | 国 II China II | 国 III China III | 国 IV China IV |
| 额定功率 Rated power | 41 kW (56 hp) | 36.8 kW (50 hp) | 36.8 kW (50 hp) |
| 转速 RPM | 2,500 rpm | 2,500 rpm | 2,500 rpm |



SPD175S-7/SPDB175S-7 柴动螺杆式空气压缩机 Diesel Screw Compressors

适用工况/ Working conditions

- 设备配套 Work with other equipment
- 风镐 Jack hammer
- 排渣吹孔 Cutting flushing & Hole blowing
- 风动凿岩机 Pneumatic rock drill

| | | | |
|---------------------------|---------------|-----------------|-----------------|
| 发动机品牌 Engine manufacturer | 锡柴 Xichai | 锡柴 Xichai | 锡柴 Xichai |
| 型号 Model | 4DW91-56G2 | 4DW91-50GBG3U | 4DW91-50GDG42 |
| 排放标准 Emission standard | 国 II China II | 国 III China III | 国 IV China IV |
| 额定功率 Rated power | 41 kW (56 hp) | 36.8 kW (50 hp) | 36.8 kW (50 hp) |
| 转速 RPM | 2,500 rpm | 2,500 rpm | 2,500 rpm |



SPD280S-7 柴动螺杆式空气压缩机 Diesel Screw Compressors

适用工况/ Working conditions

- 3.5寸潜孔锤 3.5" Hammer
- 喷浆支护 Shotcrete
- 排渣吹孔 Cutting flushing & Hole blowing
- 风动凿岩机 Pneumatic rock drill

| | | | |
|---------------------------|---------------|-----------------|---------------|
| 发动机品牌 Engine manufacturer | 锡柴 Xichai | 锡柴 Xichai | 锡柴 Xichai |
| 型号 Model | 4DX21-72 | 4DW94-80GG32 | 4DW94-75GG42 |
| 排放标准 Emission standard | 国 II China II | 国 III China III | 国 IV China IV |
| 额定功率 Rated power | 53 kW (72 hp) | 59 kW (80 hp) | 55 kW (75 hp) |
| 转速 RPM | 1,950 rpm | 1,950 rpm | 1,950 rpm |



SPD425S-7B/SPD350S-10B 柴动螺杆式空气压缩机 Diesel Screw Compressors

适用工况/ Working conditions

- 3.5寸潜孔锤 3.5" Hammer
- 喷浆支护 Shotcrete
- 排渣吹孔 Cutting flushing & Hole blowing
- 风动凿岩机 Pneumatic rock drill

| | | | |
|---------------------------|-----------------|-----------------|-----------------|
| 发动机品牌 Engine manufacturer | 康明斯 Cummins | 康明斯 Cummins | 康明斯 Cummins |
| 型号 Model | 4BTAA3.9-C130 | QSB3.9-C130 | B3.9CS4-130C |
| 排放标准 Emission standard | 国 II China II | 国 III China III | 国 IV China IV |
| 额定功率 Rated power | 97 kW (130 hp) | 97 kW (130 hp) | 96 kW (128 hp) |
| 转速 RPM | 1,900/2,050 rpm | 1,900/2,050 rpm | 1,900/2,050 rpm |



移动式螺杆空气压缩机 Portable Screw Compressors

| 主要技术规格 Main Specifications | SPD500S-12-15 | SPD500S-12-15B | SPD440D-12-18 | SPD510D-15-18B |
|-------------------------------|----------------------------------|----------------------------------|-------------------------------|-------------------------------|
| 油箱容量/Diesel tank volume | 230 L | 230 L | 230 L | 230 L |
| 额定排气量/Rated FAD | 14/12 m ³ /min | 14/12 m ³ /min | 12.5/10.5 m ³ /min | 15/13 m ³ /min |
| 额定压力/Nominal pressure, max | 12/15 bar | 12/15 bar | 12/18 bar | 15/18 bar |
| 机头/Air End | 一级压缩 Single-stage compression | 一级压缩 Single-stage compression | 二级压缩 Two-stage compression | 二级压缩 Two-stage compression |
| 形式/Type | 四轮 4 Wheel | 四轮 4 Wheel | 四轮 4 Wheel | 四轮 4 Wheel |
| 重量/Weight | 2,520 kg | 2,520 kg | 2,950 kg | 3,050 kg |
| 外形尺寸/Dimensions (LxWxH) | 3,250x1,610x2,200mm | 3,250x1,610x2,200mm | 3,450x1,750x2,290mm | 3,450x1,750x2,290mm |
| 出口管径/Air Discharge Valve Size | G1-1/2" 和 G1" | G1-1/2" 和 G1" | G1-1/2" 和 G1" | G1-1/2" 和 G1" |

裸机/固定式螺杆空气压缩机 Without frame or stationary, box type screw air compressor

| 主要技术规格 Main Specifications | SPDB440D-12-18 | SPDB510D-15-18B |
|-------------------------------|-------------------------------|----------------------------|
| 油箱容量/Diesel tank volume | 230 L | 230 L |
| 额定排气量/Rated FAD | 12.5/10.5 m ³ /min | 15/13 m ³ /min |
| 额定压力/Nominal pressure, max | 12/18 bar | 15/18 bar |
| 机头/Air End | 二级压缩 Two-stage compression | 二级压缩 Two-stage compression |
| 形式/Type | 固定 Utility truck installed | 固定 Utility truck installed |
| 重量/Weight | 2,800 kg | 2,900 kg |
| 外形尺寸/Dimensions (LxWxH) | 3,050x1,675x2,000 mm | 3,050x1,675x2,000 mm |
| 出口管径/Air Discharge Valve Size | G1-1/2" 和 G1" | G1-1/2" 和 G1" |

柴动系列产品特点 1 / Diesel Screw Compressors Product Features 01

■ 螺杆主机: 采用自主研发高效大排量的螺杆机主机, 自主研发的转子型线, 该型线相对传统型线具有更合理的泄漏三角形、更短的接触线、更小的排气封闭容积。采用合理的轴承配置, 提高转子刚性, 优化喷油量, 使压缩机具有更低噪音和更小的振动。

■ Screw Rotor Airend: The self-developed screw rotor with high efficiency and large displacement adopts the self-developed rotor profile, which has a more optimized leakage triangle, shorter contact line and smaller discharge end space than the traditional profile. With precise bearing arrangement to improve rotor rigidity, and optimized oil injecting ratio, ZHIGAO compressors operate with lower noise and less vibration.



应用一 Application 1



应用二 Application 2



应用三 Application 3



应用四 Application 4

SPD500S-12-15 柴动螺杆式空气压缩机 Diesel Screw Compressors

适用工况/ Working conditions

- 4寸潜孔锤 4" Hammer
- 排渣吹孔 Cutting flushing & Hole blowing
- 喷浆支护 Shotcrete
- 矿气气源 Mining compressed air source

| | | |
|---------------------------|-----------------|-----------------|
| 发动机品牌 Engine manufacturer | 玉柴 Yuchai | 玉柴 Yuchai |
| 型号 Model | YC6J190-H30 | YCA07P190-T401 |
| 排放标准 Emission standard | 国III China III | 国IV China IV |
| 额定功率 Rated power | 140 kW (190 hp) | 140 kW (190 hp) |
| 转速 RPM | 2,000 rpm | 2,000 rpm |



SPD500S-12-15B 柴动螺杆式空气压缩机 Diesel Screw Compressors

适用工况/ Working conditions

- 4寸潜孔锤 4" Hammer
- 排渣吹孔 Cutting flushing & Hole blowing
- 喷浆支护 Shotcrete
- 矿气气源 Mining compressed air source

| | | | |
|---------------------------|-----------------|-----------------|-----------------|
| 发动机品牌 Engine manufacturer | 康明斯 Cummins | 康明斯 Cummins | 康明斯 Cummins |
| 型号 Model | 6BTAA5.9-C190 | QSB5.9-C190 | B5.9CS4 190C |
| 排放标准 Emission standard | 国II China II | 国III China III | 国IV China IV |
| 额定功率 Rated power | 142 kW (190 hp) | 142 kW (190 hp) | 142 kW (190 hp) |
| 转速 RPM | 2,000 rpm | 2,000 rpm | 2,000 rpm |



SPD440D-12-18/SPDB440D-12-18 柴动螺杆式空气压缩机 Diesel Screw Compressors

适用工况/ Working conditions

- 4寸潜孔锤 4" Hammer
- 排渣吹孔 Cutting flushing & Hole blowing
- 喷浆支护 Shotcrete
- 矿气气源 Mining compressed air source

| | | |
|---------------------------|-----------------|-----------------|
| 发动机品牌 Engine manufacturer | 玉柴 Yuchai | 玉柴 Yuchai |
| 型号 Model | YC6J190-H30 | YCA07P190-T401 |
| 排放标准 Emission standard | 国III China III | 国IV China IV |
| 额定功率 Rated power | 140 kW (190 hp) | 140 kW (190 hp) |
| 转速 RPM | 2,000 rpm | 2,000 rpm |



SPD510D-15-18B/SPDB510D-15-18B 柴动螺杆式空气压缩机 Diesel Screw Compressors

适用工况/ Working conditions

- 4寸潜孔锤 4" Hammer
- 排渣吹孔 Cutting flushing & Hole blowing
- 喷浆支护 Shotcrete
- 矿气气源 Mining compressed air source

| | | | |
|---------------------------|-----------------|-----------------|-----------------|
| 发动机品牌 Engine manufacturer | 康明斯 Cummins | 康明斯 Cummins | 康明斯 Cummins |
| 型号 Model | 6BTAA5.9-C205 | QSB5.9-C220 | B5.9CS4 220C |
| 排放标准 Emission standard | 国II China II | 国III China III | 国IV China IV |
| 额定功率 Rated power | 153 kW (205 hp) | 157 kW (220 hp) | 154 kW (220 hp) |
| 转速 RPM | 2,000 rpm | 2,000 rpm | 2,000 rpm |



移动式螺杆空气压缩机 Portable Screw Compressors

| 主要技术规格 Main Specifications | SPD510D -15-18 | SPD600D -15-18 | SPD570D -18-22 | SPD670D -18-22 | SPD655D -18-22 | SPD880D -8 |
|-------------------------------|----------------------------|----------------------------|----------------------------|----------------------------|-------------------------------|----------------------------|
| 油箱容量/Diesel tank volume | 230 L | 350 L | 350 L | 350 L | 350 L | 350 L |
| 额定排气量/Rated FAD | 15/13 m ³ /min | 17/15 m ³ /min | 16/15 m ³ /min | 17/15 m ³ /min | 18.5/16.5 m ³ /min | 25 m ³ /min |
| 额定压力/Nominal pressure, max | 15/18 bar | 15/18 bar | 18/22 bar | 18/22 bar | 18/22 bar | 8 bar |
| 机头/Air End | 二级压缩 Two-stage compression | 二级压缩 Two-stage compression | 二级压缩 Two-stage compression | 二级压缩 Two-stage compression | 二级压缩 Two-stage compression | 二级压缩 Two-stage compression |
| 形式/Type | 四轮 4 Wheel | 四轮 4 Wheel | 四轮 4 Wheel | 四轮 4 Wheel | 四轮 4 Wheel | 四轮 4 Wheel |
| 重量/Weight | 3,200 kg | 3,920 kg | 3,950 kg | 3,950 kg | 3,870 kg | 3,950 kg |
| 外形尺寸/Dimensions (LxWxH) | 3,450x1,750x2,290mm | 3,600x1,910x2,420mm | 3,600x1,910x2,420mm | 3,600x1,910x2,420mm | 3,600x1,910x2,420mm | 3,600x1,910x2,420mm |
| 出口管径/Air Discharge Valve Size | G1-1/2" 和 G1" | G2" 和 G1-1/2" | G2" 和 G1-1/2" | G2" 和 G1-1/2" | G2" 和 G1-1/2" | G2" 和 G1-1/2" |

裸机/固定式螺杆空气压缩机 Without frame or stationary, box type screw air compressor

| 主要技术规格 Main Specifications | SPDB510D -15-18 | SPDB600D -15-18 | SPDB570D- 18-22 | SPDB670D -18-22 | SPDB655D -18-22 | SPDB880D -8 |
|-------------------------------|----------------------------|----------------------------|----------------------------|----------------------------|-------------------------------|----------------------------|
| 油箱容量/Diesel tank volume | 230 L | 350 L | 350 L | 350 L | 350 L | 350 L |
| 额定排气量/Rated FAD | 15/13 m ³ /min | 17/15 m ³ /min | 16/15 m ³ /min | 17/15 m ³ /min | 18.5/16.5 m ³ /min | 25m ³ /min |
| 额定压力/Nominal pressure, max | 15/18 bar | 15/18 bar | 18/22 bar | 18/22 bar | 18/22 bar | 8 bar |
| 机头/Air End | 二级压缩 Two-stage compression | 二级压缩 Two-stage compression | 二级压缩 Two-stage compression | 二级压缩 Two-stage compression | 二级压缩 Two-stage compression | 二级压缩 Two-stage compression |
| 形式/Type | 固定 Utility truck installed | 固定 Utility truck installed | 固定 Utility truck installed | 固定 Utility truck installed | 固定 Utility truck installed | 固定 Utility truck installed |
| 重量/Weight | 3,150 kg | 3,620 kg | 3,650 kg | 3,650 kg | 3,600 kg | 3,650 kg |
| 外形尺寸/Dimensions (LxWxH) | 3,050x1,675x2,000mm | 3,250x1,840x2,100mm | 3,250x1,840x2,100mm | 3,250x1,840x2,100mm | 3,250x1,840x2,100mm | 3,250x1,840x2,100mm |
| 出口管径/Air Discharge Valve Size | G1-1/2" 和 G1" | G2" 和 G1-1/2" | G2" 和 G1-1/2" | G2" 和 G1-1/2" | G2" 和 G1-1/2" | G2" 和 G1-1/2" |

柴动系列产品特点 2 / Diesel Screw Compressors Product Features 02

■ 产品双压力设计，其中低压时排气量可加大15-20%，一键自由切换；低压时更多配套工程、矿山项目的支护及其他设备的气源；高压时更多配套高压潜孔冲击器凿岩及深孔排渣排泥；

■ Dual-pressure mode design: the discharge volume can be increased by 15-20% in low-pressure mode, and the high/low pressure mode can be freely switched with one button; The low air pressure mode is more used in the support of construction and mining projects, or the air source of other equipment; while high air pressure is more used in cutting flushing or mud discharging for high-pressure down-the-hole impact hammers and deep-hole drilling scenarios;



应用一 Application 1



应用二 Application 2



应用三 Application 3



应用四 Application 4

SPD510D-15-18/SPDB510D-15-18

柴动螺杆式空气压缩机 Diesel Screw Compressors

适用工况/ Working conditions

- 4寸潜孔锤 4" Hammer
- 排渣吹孔 Cutting flushing & Hole blowing
- 喷浆支护 Shotcrete
- 矿山气源 Mining compressed air source

| | | |
|---------------------------|-----------------|-----------------|
| 发动机品牌 Engine manufacturer | 玉柴 Yuchai | 玉柴 Yuchai |
| 型号 Model | YC6J220-T300 | YCA07P220-T400 |
| 排放标准 Emission standard | 国III China III | 国IV China IV |
| 额定功率 Rated power | 162 kW (220 hp) | 162 kW (220 hp) |
| 转速 RPM | 2,000 rpm | 2,000 rpm |



SPD(B)600D-15-18/SPD(B)570D-18-22

柴动螺杆式空气压缩机 Diesel Screw Compressors

适用工况/ Working conditions

- 4寸/5寸潜孔锤 4"/5" Hammer
- 排渣吹孔 Cutting flushing & Hole blowing
- 喷浆支护 Shotcrete
- 矿山气源 Mining compressed air source

| | | | |
|---------------------------|-----------------|-----------------|-----------------|
| 发动机品牌 Engine manufacturer | 玉柴 Yuchai | 玉柴 Yuchai | 玉柴 Yuchai |
| 型号 Model | YC6A260L-T20 | YC6A260-H300 | YCA07P260-T400 |
| 排放标准 Emission standard | 国II China II | 国III China III | 国IV China IV |
| 额定功率 Rated power | 191 kW (260 hp) | 191 kW (260 hp) | 191 kW (260 hp) |
| 转速 RPM | 1,800 rpm | 1,800 rpm | 1,800 rpm |



SPD(B)670D-18-22/SPD(B)880D-8

柴动螺杆式空气压缩机 Diesel Screw Compressors

适用工况/ Working conditions

- 4寸/5寸潜孔锤 4"/5" Hammer
- 排渣吹孔 Cutting flushing & Hole blowing
- 喷浆支护 Shotcrete
- 矿山气源 Mining compressed air source

| | | | |
|---------------------------|-----------------|-----------------|-----------------|
| 发动机品牌 Engine manufacturer | 康明斯 Cummins | 康明斯 Cummins | 康明斯 Cummins |
| 型号 Model | 6CTA8.3-C260 | QSC8.3-C260 | B6.7CS4 260C |
| 排放标准 Emission standard | 国II China II | 国III China III | 国IV China IV |
| 额定功率 Rated power | 194 kW (260 hp) | 194 kW (260 hp) | 194 kW (260 hp) |
| 转速 RPM | 1,900 rpm | 1,900 rpm | 1,900 rpm |



SPD655D-18-22/SPDB655D-18-22

柴动螺杆式空气压缩机 Diesel Screw Compressors

适用工况/ Working conditions

- 4寸/5寸潜孔锤 4"/5" Hammer
- 排渣吹孔 Cutting flushing & Hole blowing
- 喷浆支护 Shotcrete
- 矿山气源 Mining compressed air source

| | | |
|---------------------------|-----------------|-----------------|
| 发动机品牌 Engine manufacturer | 玉柴 Yuchai | 玉柴 Yuchai |
| 型号 Model | YC6L310-H300 | YCA08300-T400 |
| 排放标准 Emission standard | 国III China III | 国IV China IV |
| 额定功率 Rated power | 228 kW (310 hp) | 221 kW (300 hp) |
| 转速 RPM | 1,900 rpm | 1,900 rpm |



移动式螺杆空气压缩机 Portable Screw Compressors

| 主要技术规格 Main Specifications | SPD750D-18-22 | SPD920D-18-25 | SPD950D-18-25 | SPD1060D-25 | SPD1050D-22-34 |
|-------------------------------|-------------------------------|-------------------------------|-------------------------------|-------------------------------|-------------------------------|
| 油箱容量/Diesel tank volume | 485 L | 485 L | 485 L | 750 L | 750 L |
| 额定排气量/Rated FAD | 22/19 m ³ /min | 26/23 m ³ /min | 27/24 m ³ /min | 30 m ³ /min | 30/26 m ³ /min |
| 额定压力/Nominal pressure, max | 18/22 bar | 18/25 bar | 18/25bar | 25 bar | 22/34 bar |
| 机头/Air End | 二级压缩 Two-stage compression | 二级压缩 Two-stage compression | 二级压缩 Two-stage compression | 二级压缩 Two-stage compression | 二级压缩 Two-stage compression |
| 形式/Type | 四轮 4 Wheel | 四轮 4 Wheel | 四轮 4 Wheel | 四轮 4 Wheel | 四轮 4 Wheel |
| 重量/Weight | 4,600 kg | 5,300 kg | 5,100 kg | 6,600 kg | 6,600 kg |
| 外形尺寸/Dimensions (LxWxH) | 4,180x2,080x2,510mm | 4,180x2,080x2,510mm | 4,180x2,080x2,510mm | 4,600x2,150x2,750mm | 4,600x2,150x2,750mm |
| 出口管径/Air Discharge Valve Size | G2" 和 G1-1/2" | G2" 和 G1-1/2" | G2" 和 G1-1/2" | G2-1/2" 和 G1-1/2" | G2-1/2" 和 G1-1/2" |

裸机/固定式螺杆空气压缩机 Without frame or stationary, box type screw air compressor

| 主要技术规格 Main Specifications | SPDB750D-18-22 | SPDB920D-18-25 | SPDB950D-18-25 | SPDB1060D-25 | SPDB1050D-22-34 |
|-------------------------------|-------------------------------|-------------------------------|-------------------------------|-------------------------------|-------------------------------|
| 油箱容量/Diesel tank volume | 485L | 485 L | 485 L | 750 L | 750 L |
| 额定排气量/Rated FAD | 22/19 m ³ /min | 26/23 m ³ /min | 27/24 m ³ /min | 30 m ³ /min | 30/26 m ³ /min |
| 额定压力/Nominal pressure, max | 18/22 bar | 18/25 bar | 18/25 bar | 25 bar | 22/34 bar |
| 机头/Air End | 二级压缩 Two-stage compression | 二级压缩 Two-stage compression | 二级压缩 Two-stage compression | 二级压缩 Two-stage compression | 二级压缩 Two-stage compression |
| 形式/Type | 固定 Utility truck installed | 固定 Utility truck installed | 固定 Utility truck installed | 固定 Utility truck installed | 固定 Utility truck installed |
| 重量/Weight | 4,300 kg | 4,900 kg | 4,900 kg | 6,000 kg | 6,000 kg |
| 外形尺寸/Dimensions (LxWxH) | 3,900x2,010x2,190mm | 3,900x2,010x2,190mm | 3,900x2,010x2,190mm | 4,050x2,150x2,350mm | 4,050x2,150x2,350mm |
| 出口管径/Air Discharge Valve Size | G2" 和 G1-1/2" | G2" 和 G1-1/2" | G2" 和 G1-1/2" | G2-1/2" 和 G1-1/2" | G2-1/2" 和 G1-1/2" |

柴动系列产品特点 3 / Diesel Screw Compressors Product Features 03

产品压缩机油、冷却液、机油采用集中排污设计，日常油水更换更方便；舱门为侧开式，维护保养空间大，滤芯配有专用拆卸保养工具，其中36.8kw配置外置油分设计，保养更便捷；冷却器导风罩设计清灰口，便于日常清理；

Fully consider maintainability: air compressor oil, coolant and engine oil are designed with centralized discharge, which makes it more convenient to replace oil and water during maintenance; the enclosure doors are side-open, with spacious maintenance space, and the filter element is equipped with special disassembly and maintenance tools, of which the 36.8kW is equipped with an external air compressor oil-air separator design, which is more convenient for maintenance; the cooler air guide is designed with a cleaning port for dust and debris, which is convenient for routine cleaning;



应用一 Application 1



应用二 Application 2



应用三 Application 3



应用四 Application 4

SPD750D-18-22/SPDB750D-18-22 柴动螺杆式空气压缩机 Diesel Screw Compressors

适用工况/ Working conditions

- 5寸/6寸潜孔锤 5"/6" Hammer
- 排渣吹孔 Cutting flushing & Hole blowing
- 喷浆支护 Shotcrete
- 矿山气源 Mining compressed air source

| 发动机品牌 Engine manufacturer | 康明斯 Cummins | 康明斯 Cummins | 康明斯 Cummins |
|---------------------------|-----------------|-----------------|-----------------|
| 型号 Model | 6LTA8.9-C360 | QSL8.9-C360 | L9CS4 360C |
| 排放标准 Emission standard | 国 II China II | 国 III China III | 国 IV China IV |
| 额定功率 Rated power | 264 kW (360 hp) | 264 kW (360 hp) | 264 kW (360 hp) |
| 转速 RPM | 1,850 rpm | 1,850 rpm | 1,850 rpm |



SPD920D-18-25/SPDB920D-18-25 柴动螺杆式空气压缩机 Diesel Screw Compressors

适用工况/ Working conditions

- 6寸/7寸潜孔锤 6"/7" Hammer
- 排渣吹孔 Cutting flushing & Hole blowing
- 喷浆支护 Shotcrete
- 矿山气源 Mining compressed air source

| 发动机品牌 Engine manufacturer | 锡柴 Xichai | 锡柴 Xichai | 锡柴 Xichai |
|---------------------------|-----------------|-----------------|-----------------|
| 型号 Model | CA6DM2-42 | CA6DM2-42GAG31 | CA6DM2-42GBG41 |
| 排放标准 Emission standard | 国 II China II | 国 III China III | 国 IV China IV |
| 额定功率 Rated power | 309 kW (420 hp) | 309 kW (420 hp) | 309 kW (420 hp) |
| 转速 RPM | 1,800 rpm | 1,800 rpm | 1,800 rpm |



SPD950D-18-25/SPDB950D-18-25 柴动螺杆式空气压缩机 Diesel Screw Compressors

适用工况/ Working conditions

- 6寸/7寸潜孔锤 6"/7" Hammer
- 排渣吹孔 Cutting flushing & Hole blowing
- 喷浆支护 Shotcrete
- 矿山气源 Mining compressed air source

| 发动机品牌 Engine manufacturer | 玉柴 Yuchai | 玉柴 Yuchai | 玉柴 Yuchai |
|---------------------------|-----------------|-----------------|-----------------|
| 型号 Model | YC6MK400L-K20 | YC6MK400-H300 | YCK09400-T400 |
| 排放标准 Emission standard | 国 II China II | 国 III China III | 国 IV China IV |
| 额定功率 Rated power | 315 kW (400 hp) | 315 kW (400 hp) | 315 kW (400 hp) |
| 转速 RPM | 1,800 rpm | 1,800 rpm | 1,800 rpm |



SPD(B)1050D-22-34/SPD(B)1060D-25 柴动螺杆式空气压缩机 Diesel Screw Compressors

适用工况/ Working conditions

- 7寸/8寸潜孔锤 7"/8" Hammer
- 排渣吹孔 Cutting flushing & Hole blowing
- 喷浆支护 Shotcrete
- 矿山气源 Mining compressed air source

| 发动机品牌 Engine manufacturer | 康明斯 Cummins | 康明斯 Cummins |
|---------------------------|-------------------------------|----------------------------|
| 型号 Model | QS213-C550(SPD(B)1050D-22-34) | QS213-C475(SPD(B)1060D-25) |
| 排放标准 Emission standard | 国 III China III | 国 III China III |
| 额定功率 Rated power | 410 kW (550 hp) | 354 kW (475 hp) |
| 转速 RPM | 1,800 rpm | 1,800 rpm |



移动式螺杆空气压缩机 Portable Screw Compressors

| 主要技术规格 Main Specifications | SPD1590D-18-25 | SPD1400D-25-34 | SPD1800D-18-25 | SPD1600D-25-34 |
|-------------------------------|-------------------------------|-------------------------------|-------------------------------|-------------------------------|
| 油箱容量/Diesel tank volume | 1100 L | 1100 L | 1100L | 1100L |
| 额定排气量/Rated FAD | 47/42 m ³ /min | 41/34 m ³ /min | 52/45 m ³ /min | 47/40 m ³ /min |
| 额定压力/Nominal pressure, max | 18/25 bar | 25/34 bar | 18/25 bar | 25/34 bar |
| 机头/Air End | 二级压缩 Two-stage compression | 二级压缩 Two-stage compression | 二级压缩 Two-stage compression | 二级压缩 Two-stage compression |
| 形式/Type | 四轮 4 Wheel | 四轮 4 Wheel | 四轮 4 Wheel | 四轮 4 Wheel |
| 重量/Weight | 9,000 kg | 8,500 kg | 9,300 kg | 9,300 kg |
| 外形尺寸/Dimensions (LxWxH) | 5,100x2,230x2,950mm | 5,100x2,230x2,950mm | 5,100x2,230x2,950mm | 5,100x2,230x2,950mm |
| 出口管径/Air Discharge Valve Size | G2-1/2" 和 G1-1/2" | G2-1/2" 和 G1-1/2" | G2 1/2" 和 G1 1/2" | G2 1/2" 和 G1 1/2" |

裸机/固定式螺杆空气压缩机 Without frame or stationary, box type screw air compressor

| 主要技术规格 Main Specifications | SPDB1590D-18-25 | SPDB1400D-25-34 | SPDB1800D-18-25 | SPDB1600D-25-34 |
|-------------------------------|-------------------------------|-------------------------------|-------------------------------|-------------------------------|
| 油箱容量/Diesel tank volume | 1100 L | 1100 L | 1100L | 1100L |
| 额定排气量/Rated FAD | 47/42 m ³ /min | 41/34 m ³ /min | 52/45 m ³ /min | 47/40 m ³ /min |
| 额定压力/Nominal pressure, max | 18/25 bar | 25/34 bar | 18/25 bar | 25/34 bar |
| 机头/Air End | 二级压缩 Two-stage compression | 二级压缩 Two-stage compression | 二级压缩 Two-stage compression | 二级压缩 Two-stage compression |
| 形式/Type | 固定 Utility truck installed | 固定 Utility truck installed | 固定 Utility truck installed | 固定 Utility truck installed |
| 重量/Weight | 7,800 kg | 7,300 kg | 8,100 kg | 8,100 kg |
| 外形尺寸/Dimensions (LxWxH) | 4,750x2,230x2,570mm | 4,750x2,230x2,570mm | 4,750x2,230x2,570mm | 4,750x2,230x2,570mm |
| 出口管径/Air Discharge Valve Size | G2-1/2" 和 G1-1/2" | G2-1/2" 和 G1-1/2" | G2 1/2" 和 G1 1/2" | G2 1/2" 和 G1 1/2" |

柴动系列产品特点 4 / Diesel Screw Compressors Product Features 04

■ 定制开发的专用控制器:主要参数、设备运行状况、各项运行参数清晰显示,加卸载、停机等功能一键操作,自动化程度高,通过压力、温度传感器来监控相关参数,并通过发动机ECU和控制器计算并执行合理的喷油量,达到程序压力设置点时自动开启节能模式,并可根据客户特殊需求,增加程序功能,使用方便;

■ Custom-developed special controller: the main parameters, equipment operating status, and various operating parameters are clearly displayed; One-click operation loading/unloading, stopping and other functions; High degree of automation; The relevant parameters are monitored through the pressure and temperature sensors, and the appropriate injection volume is calculated and executed through the engine ECU and controller, and the energy-saving mode is automatically turned on when the program pressure setting is reached, and the program function can be added according to the special needs of customers.

柴动系列产品特点 5 / Diesel Screw Compressors Product Features 05

■ 产品配置移动、固定一体式设计,同型号可自由选配;产品的体积充分考虑了车载及装箱的要求;机舱内置隔音板,降低噪音同时保证维护空间;大型空压机风扇为离合风扇配置,风扇转速结合排气温度进行电控,产品适用环境温度区间更广,节能及散热效果好;采用独立进风设计,空滤进风不受机器内部高温影响;

■ The portable / utility truck installation form is integrated design, and the same model can be freely selected; The overall dimensions of the product fully consider the requirements of truck installation and container loading; Sound insulation is installed in the enclosure to reduce noise without compromising on maintenance space; The cooling fan of the large air compressor is equipped with a clutch, and the fan speed is put the discharge air temperature in count for electronic control, which is suitable for a wider range of ambient temperatures, and has good energy saving and cooling effects; With independent air inlet design, the air intake of the air filter is not affected by the internal high temperature;



SPD1590D-18-25/SPDB1590D-18-25 柴动螺杆式空气压缩机 Diesel Screw Compressors

适用工况/ Working conditions

- 8寸/10寸潜孔锤 8"/10" Hammer
- 排渣吹孔 Cutting flushing & Hole blowing
- 喷浆支护 Shotcrete
- 矿山气源 Mining compressed air source

| | |
|---------------------------|-----------------|
| 发动机品牌 Engine manufacturer | 康明斯 Cummins |
| 型号 Model | QSM15 77C |
| 排放标准 Emission standard | 国III China III |
| 额定功率 Rated power | 563 kW (770 hp) |
| 转速 RPM | 1,800 rpm |



SPD1400D-25-34/SPDB1400D-25-34 柴动螺杆式空气压缩机 Diesel Screw Compressors

适用工况/ Working conditions

- 8寸/10寸潜孔锤 8"/10" Hammer
- 排渣吹孔 Cutting flushing & Hole blowing
- 喷浆支护 Shotcrete
- 矿山气源 Mining compressed air source

| | |
|---------------------------|-----------------|
| 发动机品牌 Engine manufacturer | 康明斯 Cummins |
| 型号 Model | QSM15 77C |
| 排放标准 Emission standard | 国III China III |
| 额定功率 Rated power | 563 kW (770 hp) |
| 转速 RPM | 1,800 rpm |



SPD1800D-18-25/SPDB1800D-18-25 柴动螺杆式空气压缩机 Diesel Screw Compressors

适用工况/ Working conditions

- 8寸/10寸潜孔锤 8"/10" Hammer
- 排渣吹孔 Cutting flushing & Hole blowing
- 喷浆支护 Shotcrete
- 矿山气源 Mining compressed air source

| | |
|---------------------------|-----------------|
| 发动机品牌 Engine manufacturer | 沃尔沃 Volvo |
| 型号 Model | TAD1643VE-B |
| 排放标准 Emission standard | 国III China III |
| 额定功率 Rated power | 565 kW (770 hp) |
| 转速 RPM | 1,900 rpm |



SPD1600D-25-34/SPDB1600D-25-34 柴动螺杆式空气压缩机 Diesel Screw Compressors

适用工况/ Working conditions

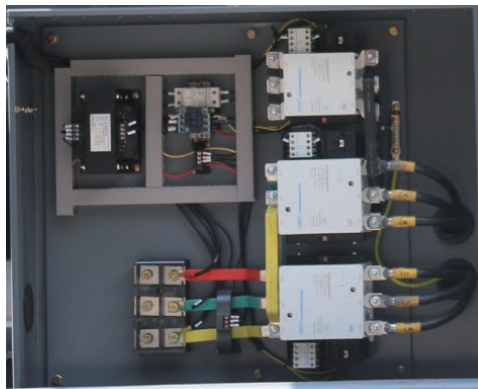
- 8寸/10寸潜孔锤 8"/10" Hammer
- 排渣吹孔 Cutting flushing & Hole blowing
- 喷浆支护 Shotcrete
- 矿山气源 Mining compressed air source

| | |
|---------------------------|-----------------|
| 发动机品牌 Engine manufacturer | 沃尔沃 Volvo |
| 型号 Model | TAD1643VE-B |
| 排放标准 Emission standard | 国III China III |
| 额定功率 Rated power | 565 kW (770 hp) |
| 转速 RPM | 1,900 rpm |



| 主要技术规格 Main Specifications | SPE100S-8 | SPE135S-8 | SPE175S-8 | SPE170S-10 |
|-------------------------------|----------------------------------|----------------------------------|----------------------------------|----------------------------------|
| 电机功率/Diesel tank volume | 15 kW | 22 kW | 30 kW | 30 kW |
| 电机防护等级/Motor protection class | IP54 | IP54 | IP54 | IP54 |
| 额定排气量/Rated FAD | 2.8 m ³ /min | 3.8 m ³ /min | 5 m ³ /min | 4.8 m ³ /min |
| 额定压力/Nominal pressure, max | 8 bar | 8 bar | 8 bar | 10 bar |
| 机头/Air End | 一级压缩 Single-stage compression | 一级压缩 Single-stage compression | 一级压缩 Single-stage compression | 一级压缩 Single-stage compression |
| 形式/Type | 四轮 4 Wheel | 四轮 4 Wheel | 四轮 4 Wheel | 四轮 4 Wheel |
| 重量/Weight | 290 kg | 380 kg | 500 kg | 480 kg |
| 外形尺寸/Dimensions (LxWxH) | 1,500x750x1,050mm | 1,500x750x1,050mm | 1,544x860x1,160mm | 1,544x860x1,160mm |
| 出口管径/Air Discharge Valve Size | G1" | G1" | G1" | G1" |

电动系列产品特点 1 / Electrical Screw Compressors Product Features 01



■ 采用全新一代异步高效电机，IP54电机防护，粉尘大环境也可连续运行，选用耐高温永磁体，耐温180°C不消磁，电机大轴承定制设计，可按需求配套定制电压，满足不同地区使用；加大配置的电器元件保障设备平稳运行。

■ New generation of high-efficiency AC asynchronous motor, protection grade IP54, the air compressor can run continuously even in serious dust environment, the selection of high-temperature permanent magnets, temperature resistance of 180 °C without demagnetization, and customized design of large motor bearings; The working voltage can be adapted to different regions according to customer requirements; The increased capacity of electrical components ensures the smooth and reliable operation of the air compressor.



SPE100S-8 电动螺杆式空气压缩机 Electrical Screw Compressors

适用工况/ Working conditions

- 设备配套 Work with other equipment
- 排渣吹孔 Cutting flushing & Hole blowing
- 风镐 Jack hammer
- 风动凿岩机 Pneumatic rock drill

| | |
|-------------------------------|-------|
| 电机功率 Diesel tank volume | 15 kW |
| 电机防护等级 Motor protection class | IP54 |
| 电压 Voltage | 380 V |
| 频率 Frequency | 50 HZ |

电压、频数可根据用户供电定制
Note: Working voltage and frequency can be customized according to customer requirements



SPE135S-8 电动螺杆式空气压缩机 Electrical Screw Compressors

适用工况/ Working conditions

- 设备配套 Work with other equipment
- 排渣吹孔 Cutting flushing & Hole blowing
- 风镐 Jack hammer
- 风动凿岩机 Pneumatic rock drill

| | |
|-------------------------------|-------|
| 电机功率 Diesel tank volume | 22 kW |
| 电机防护等级 Motor protection class | IP54 |
| 电压 Voltage | 380 V |
| 频率 Frequency | 50 HZ |

电压、频数可根据用户供电定制
Note: Working voltage and frequency can be customized according to customer requirements



SPE175S-8 电动螺杆式空气压缩机 Electrical Screw Compressors

适用工况/ Working conditions

- 设备配套 Work with other equipment
- 排渣吹孔 Cutting flushing & Hole blowing
- 风镐 Jack hammer
- 风动凿岩机 Pneumatic rock drill

| | |
|-------------------------------|-------|
| 电机功率 Diesel tank volume | 30 kW |
| 电机防护等级 Motor protection class | IP54 |
| 电压 Voltage | 380 V |
| 频率 Frequency | 50 HZ |

电压、频数可根据用户供电定制
Note: Working voltage and frequency can be customized according to customer requirements



SPE170S-10 电动螺杆式空气压缩机 Electrical Screw Compressors

适用工况/ Working conditions

- 设备配套 Work with other equipment
- 排渣吹孔 Cutting flushing & Hole blowing
- 风镐 Jack hammer
- 风动凿岩机 Pneumatic rock drill

| | |
|-------------------------------|-------|
| 电机功率 Diesel tank volume | 30 kW |
| 电机防护等级 Motor protection class | IP54 |
| 电压 Voltage | 380 V |
| 频率 Frequency | 50 HZ |

电压、频数可根据用户供电定制
Note: Working voltage and frequency can be customized according to customer requirements



移动式螺杆空气压缩机 Portable Screw Compressors

| 主要技术规格 Main Specifications | SPE440S-8 | SPE500S-8 | SPE460S-14.5 | SPE530D-12 | SPE460D-18 |
|-------------------------------|----------------------------------|----------------------------------|----------------------------------|-------------------------------|-------------------------------|
| 电机功率/Diesel tank volume | 75 kW | 90 kW | 90 kW | 90 kW | 90 kW |
| 电机防护等级/Motor protection class | IP54 | IP54 | IP54 | IP54 | IP54 |
| 额定排气量/Rated FAD | 13 m ³ /min | 15.5 m ³ /min | 13 m ³ /min | 17 m ³ /min | 13 m ³ /min |
| 额定压力/Nominal pressure, max | 8 bar | 8 bar | 14.5 bar | 12 bar | 18 bar |
| 机头/Air End | 一级压缩 Single-stage compression | 一级压缩 Single-stage compression | 一级压缩 Single-stage compression | 二级压缩 Two-stage compression | 二级压缩 Two-stage compression |
| 形式/Type | 四轮 4 Wheel | 四轮 4 Wheel | 四轮 4 Wheel | 四轮 4 Wheel | 四轮 4 Wheel |
| 重量/Weight | 2,020 kg | 2,150 kg | 2,120 kg | 2,350 kg | 2,350 kg |
| 外形尺寸/Dimensions (LxWxH) | 3,050x1,620x2,090mm | 3,050x1,620x2,090mm | 3,050x1,620x2,090mm | 3,050x1,620x2,090mm | 3,050x1,620x2,090mm |
| 出口管径/Air Discharge Valve Size | G1-1/2" 和 G1" | G1-1/2" 和 G1" | G1-1/2" 和 G1" | G1-1/2" 和 G1" | G1-1/2" 和 G1" |

裸机/固定式螺杆空气压缩机 Without frame or stationary, box type screw air compressor

| 主要技术规格 Main Specifications | SSE335S-8 | SSE480S-8 | SSE565S-8 | SSE660D-8 |
|-------------------------------|----------------------------------|----------------------------------|----------------------------------|-------------------------------|
| 电机功率/Diesel tank volume | 55 kW | 75 kW | 90 kW | 90 kW |
| 电机防护等级/Motor protection class | IP54 | IP54 | IP54 | IP54 |
| 额定排气量/Rated FAD | 9.8 m ³ /min | 13.2 m ³ /min | 15.5 m ³ /min | 18.5 m ³ /min |
| 额定压力/Nominal pressure, max | 8 bar | 8 bar | 8 bar | 8 bar |
| 机头/Air End | 一级压缩 Single-stage compression | 一级压缩 Single-stage compression | 一级压缩 Single-stage compression | 二级压缩 Two-stage compression |
| 形式/Type | 固定 Utility truck installed | 固定 Utility truck installed | 固定 Utility truck installed | 固定 Utility truck installed |
| 重量/Weight | 1,040 kg | 1,585 kg | 1,695 kg | 2,185 kg |
| 外形尺寸/Dimensions (LxWxH) | 2,225x1,210x1,360mm | 2,525x1,410x1,600mm | 2,525x1,410x1,600mm | 2,825x1,525x1,620mm |
| 出口管径/Air Discharge Valve Size | G1-1/2" | G2" | G2" | G2-1/2" |

电动系列产品特点 2 / Electrical Screw Compressors Product Features 02

■ 冷却器为自主设计, 质量可靠, 冷却余量25%, 各冷却器间均为分体板式固定减震安装, 避免热膨胀引起冷却器损坏现象, 确保机器在极恶劣环境下也能正常运行, 单个保养更换方便; 采用单流程冷却系统, 热辐射比例更大, 降温效果更好, 可减少风扇能耗, 有效节能;

■ The cooler is independently designed, with reliable quality, cooling margin of 25%, and each cooler is fixed with independent plate shock absorption to avoid damage to the cooler caused by thermal expansion, and ensure that the air compressor can operate normally in extremely harsh environments, and it is easy to maintain and replace separately; The single-flow cooling system is adopted, the heat radiation is larger, the cooling effect is better, and the energy consumption of the fan is reduced.



SSE335S-8 电动螺杆式空气压缩机 Electrical Screw Compressors

适用工况/ Working conditions

- 喷浆支护 Shotcrete
- 排渣吹孔 Cutting flushing & Hole blowing
- 风镐 Jack hammer
- 风动凿岩机 Pneumatic rock drill

| | |
|-------------------------------|-------|
| 电机功率 Diesel tank volume | 55 kW |
| 电机防护等级 Motor protection class | IP54 |
| 电压 Voltage | 380 V |
| 频率 Frequency | 50 HZ |

电压、频数可根据用户供电定制
Note: Working voltage and frequency can be customized according to customer requirements



SSE480S-8/SPE440S-8 电动螺杆式空气压缩机 Electrical Screw Compressors

适用工况/ Working conditions

- 喷浆支护 Shotcrete
- 排渣吹孔 Cutting flushing & Hole blowing
- 风镐 Jack hammer
- 风动凿岩机 Pneumatic rock drill

| | |
|-------------------------------|-------|
| 电机功率 Diesel tank volume | 75 kW |
| 电机防护等级 Motor protection class | IP54 |
| 电压 Voltage | 380 V |
| 频率 Frequency | 50 HZ |

电压、频数可根据用户供电定制
Note: Working voltage and frequency can be customized according to customer requirements



SSE565S-8/SPE460S-14.5 电动螺杆式空气压缩机 Electrical Screw Compressors

适用工况/ Working conditions

- 3.5寸/4寸潜孔锤 3.5"/4" Hammer
- 排渣吹孔 Cutting flushing & Hole blowing
- 喷浆支护 Shotcrete
- 风动凿岩机 Pneumatic rock drill

| | |
|-------------------------------|-------|
| 电机功率 Diesel tank volume | 90 kW |
| 电机防护等级 Motor protection class | IP54 |
| 电压 Voltage | 380 V |
| 频率 Frequency | 50 HZ |

电压、频数可根据用户供电定制
Note: Working voltage and frequency can be customized according to customer requirements



SSE660D-8/SPE530D-12 电动螺杆式空气压缩机 Electrical Screw Compressors

适用工况/ Working conditions

- 4寸/5寸潜孔锤 4"/5" Hammer
- 排渣吹孔 Cutting flushing & Hole blowing
- 喷浆支护 Shotcrete
- 风动凿岩机 Pneumatic rock drill

| | |
|-------------------------------|-------|
| 电机功率 Diesel tank volume | 90 kW |
| 电机防护等级 Motor protection class | IP54 |
| 电压 Voltage | 380 V |
| 频率 Frequency | 50 HZ |

电压、频数可根据用户供电定制
Note: Working voltage and frequency can be customized according to customer requirements



移动式螺杆空气压缩机 Portable Screw Compressors

| 主要技术规格 Main Specifications | SPE705S-8 | SPE495D-18 | SPE700D-12 | SPE615D-19 |
|-------------------------------|----------------------------------|-------------------------------|-------------------------------|-------------------------------|
| 电机功率/Diesel tank volume | 110 kW | 110 kW | 132 kW | 132 kW |
| 电机防护等级/Motor protection class | IP54 | IP54 | IP54 | IP54 |
| 额定排气量/Rated FAD | 20 m ³ /min | 16 m ³ /min | 21 m ³ /min | 18.5 m ³ /min |
| 额定压力/Nominal pressure, max | 8 bar | 18 bar | 12 bar | 19 bar |
| 机头/Air End | 一级压缩 Single-stage compression | 二级压缩 Two-stage compression | 二级压缩 Two-stage compression | 二级压缩 Two-stage compression |
| 形式/Type | 四轮 4 Wheel | 四轮 4 Wheel | 四轮 4 Wheel | 四轮 4 Wheel |
| 重量/Weight | 2,605 kg | 2,650 kg | 2,900 kg | 2,800 kg |
| 外形尺寸/Dimensions (LxWxH) | 3,050x1,760x2,175mm | 3,250x1,760x2,175mm | 3,250x1,760x2,175mm | 3,250x1,760x2,175mm |
| 出口管径/Air Discharge Valve Size | G2"和G1-1/2" | G2"和G1-1/2" | G2"和G1-1/2" | G2"和G1-1/2" |

裸机/固定式螺杆空气压缩机 Without frame or stationary, box type screw air compressor

| 主要技术规格 Main Specifications | SSE705S-8 | SSE845S-8 | SSE745D-8 | SSE880D-8 |
|-------------------------------|----------------------------------|----------------------------------|-------------------------------|-------------------------------|
| 电机功率/Diesel tank volume | 110 kW | 132 kW | 110 kW | 132 kW |
| 电机防护等级/Motor protection class | IP54 | IP54 | IP54 | IP54 |
| 额定排气量/Rated FAD | 20 m ³ /min | 24 m ³ /min | 21 m ³ /min | 25.5 m ³ /min |
| 额定压力/Nominal pressure, max | 8 bar | 8 bar | 8 bar | 8 bar |
| 机头/Air End | 一级压缩 Single-stage compression | 一级压缩 Single-stage compression | 二级压缩 Two-stage compression | 二级压缩 Two-stage compression |
| 形式/Type | 固定 Utility truck installed | 固定 Utility truck installed | 固定 Utility truck installed | 固定 Utility truck installed |
| 重量/Weight | 1,955 kg | 2,065 kg | 2,490 kg | 2,580 kg |
| 外形尺寸/Dimensions (LxWxH) | 2,680x1,410x1,600mm | 2,680x1,410x1,600mm | 2,965x1,525x1,740mm | 2,965x1,525x1,740mm |
| 出口管径/Air Discharge Valve Size | G2-1/2" | G2-1/2" | G2-1/2" | G2-1/2" |

电动系列产品特点 3 / Electrical Screw Compressors Product Features 03

- 电移产品空气开关从电控柜引出，外引电源和空气开关设在机体外侧，接线位置空间大，接线更顺畅，电控柜加装柜门安全设施，方便使用的同时保证安全。
- The main switch of the electric portable air compressor is moved out of the electric control cabinet, and the external power supply and the main switch are located on the outside of the body, so that the installation and connection position space is large, the power cord connection is smoother, and the electric control cabinet is equipped with cabinet door safety facilities, which is convenient to operate and does not compromise safety.



SSE705S-8/SPE705S-8 电动螺杆式空气压缩机 Electrical Screw Compressors

适用工况/ Working conditions

- 5寸/6寸潜孔锤 5"/6" Hammer
- 排渣吹孔 Cutting flushing & Hole blowing
- 喷浆支护 Shotcrete
- 风动凿岩机 Pneumatic rock drill

| | |
|-------------------------------|--------|
| 电机功率 Diesel tank volume | 110 kW |
| 电机防护等级 Motor protection class | IP54 |
| 电压 Voltage | 380 V |
| 频率 Frequency | 50 HZ |

电压、频率可根据用户供电定制
Note: Working voltage and frequency can be customized according to customer requirements



SSE745D-8/SPE495D-18 电动螺杆式空气压缩机 Electrical Screw Compressors

适用工况/ Working conditions

- 5寸/6寸潜孔锤 5"/6" Hammer
- 排渣吹孔 Cutting flushing & Hole blowing
- 喷浆支护 Shotcrete
- 风动凿岩机 Pneumatic rock drill

| | |
|-------------------------------|--------|
| 电机功率 Diesel tank volume | 110 kW |
| 电机防护等级 Motor protection class | IP54 |
| 电压 Voltage | 380 V |
| 频率 Frequency | 50 HZ |

电压、频率可根据用户供电定制
Note: Working voltage and frequency can be customized according to customer requirements



SSE845S-8/SPE700D-12 电动螺杆式空气压缩机 Electrical Screw Compressors

适用工况/ Working conditions

- 5寸/6寸潜孔锤 5"/6" Hammer
- 排渣吹孔 Cutting flushing & Hole blowing
- 喷浆支护 Shotcrete
- 风动凿岩机 Pneumatic rock drill

| | |
|-------------------------------|--------|
| 电机功率 Diesel tank volume | 132 kW |
| 电机防护等级 Motor protection class | IP54 |
| 电压 Voltage | 380 V |
| 频率 Frequency | 50 HZ |

电压、频率可根据用户供电定制
Note: Working voltage and frequency can be customized according to customer requirements



SSE880D-8/SPE615D-19 电动螺杆式空气压缩机 Electrical Screw Compressors

适用工况/ Working conditions

- 4寸/5寸潜孔锤 4"/5" Hammer
- 排渣吹孔 Cutting flushing & Hole blowing
- 喷浆支护 Shotcrete
- 风动凿岩机 Pneumatic rock drill

| | |
|-------------------------------|--------|
| 电机功率 Diesel tank volume | 132 kW |
| 电机防护等级 Motor protection class | IP54 |
| 电压 Voltage | 380 V |
| 频率 Frequency | 50 HZ |

电压、频率可根据用户供电定制
Note: Working voltage and frequency can be customized according to customer requirements



移动式螺杆空气压缩机 Portable Screw Compressors

| 主要技术规格 Main Specifications | SPE1130D-8 | SPE850D-19 | SPE680D-24 |
|-------------------------------|----------------------------|----------------------------|----------------------------|
| 电机功率/Diesel tank volume | 160 kW | 185 kW | 185 kW |
| 电机防护等级/Motor protection class | IP54 | IP54 | IP54 |
| 额定排气量/Rated FAD | 32 m ³ /min | 24 m ³ /min | 19.5 m ³ /min |
| 额定压力/Nominal pressure, max | 8 bar | 19 bar | 24 bar |
| 机头/Air End | 二级压缩 Two-stage compression | 二级压缩 Two-stage compression | 二级压缩 Two-stage compression |
| 形式/Type | 四轮 4 Wheel | 四轮 4 Wheel | 四轮 4 Wheel |
| 重量/Weight | 4,100 kg | 3,850 kg | 4,100 kg |
| 外形尺寸/Dimensions (LxWxH) | 3,960x1,920x2,375mm | 3,680x1,920x2,375mm | 3,960x1,920x2,375mm |
| 出口管径/Air Discharge Valve Size | G2"和G1-1/2" | G2"和G1-1/2" | G2"和G1-1/2" |

裸机/固定式螺杆空气压缩机 Without frame or stationary, box type screw air compressor

| 主要技术规格 Main Specifications | SSE1130D-8 | SSE1300D-8 | SSE1400D-8 |
|-------------------------------|----------------------------|----------------------------|----------------------------|
| 电机功率/Diesel tank volume | 160 kW | 185 kW | 200 kW |
| 电机防护等级/Motor protection class | IP54 | IP54 | IP54 |
| 额定排气量/Rated FAD | 32 m ³ /min | 36.5 m ³ /min | 40 m ³ /min |
| 额定压力/Nominal pressure, max | 8 bar | 8 bar | 8 bar |
| 机头/Air End | 二级压缩Two-stage compression | 二级压缩Two-stage compression | 二级压缩Two-stage compression |
| 形式/Type | 固定 Utility truck installed | 固定 Utility truck installed | 固定 Utility truck installed |
| 重量/Weight | 4,500 kg | 4,580 kg | 4,570 kg |
| 外形尺寸/Dimensions (LxWxH) | 3,100x1,860x2,260mm | 3,100x1,860x2,260mm | 3,100x1,860x2,260mm |
| 出口管径/Air Discharge Valve Size | DN100 | DN100 | DN100 |

· 型号带“V”为汇川变频机型，相同配置整机重量在工频整机基础上增加50kg

The models with V are variable frequency types of Inovance, with the whole weight of the same configuration increasing by 50kg based on that of power frequency types.

电动系列产品特点 4

/ Electrical Screw Compressors Product Features 04

■ 大功率电动产品变频智能控制：采用全新定制加大模块的矢量型变频器。启动平稳，机器运行时，可根据管网压力变化来调节压缩机产气量，避免了因为压力升高而造成能耗浪费。

■ High-power electric air compressor frequency conversion intelligent control: a new generation of vector frequency converter with customized enlarged modules. The starting is smooth, and the air supply of the air compressor can be adjusted according to the change of the pressure of the pipe network during operation, which avoids the waste of energy caused by the unnecessary increase in air pressure.



应用一 Application 1



应用二 Application 2



应用三 Application 3



应用四 Application 4

SSE1130D-8/SPE1130D-8

电动螺杆式空气压缩机 Electrical Screw Compressors

适用工况/ Working conditions

- 喷浆支护 Shotcrete
- 风镐 Jack hammer
- 排渣吹孔 Cutting flushing & Hole blowing
- 选矿配套 Mineral processing

| | |
|-------------------------------|--------|
| 电机功率 Diesel tank volume | 160 kW |
| 电机防护等级 Motor protection class | IP54 |
| 电压 Voltage | 380 V |
| 频率 Frequency | 50 HZ |

· 电压、频数可根据用户供电定制
Working voltage and frequency can be customized according to customer requirements



SSE1300D-8/SPE850D-19

电动螺杆式空气压缩机 Electrical Screw Compressors

适用工况/ Working conditions

- 6寸/7寸潜孔锤 6"/7" Hammer
- 喷浆支护 Shotcrete
- 排渣吹孔 Cutting flushing & Hole blowing
- 选矿配套 Mineral processing

| | |
|-------------------------------|--------|
| 电机功率 Diesel tank volume | 185 kW |
| 电机防护等级 Motor protection class | IP54 |
| 电压 Voltage | 380 V |
| 频率 Frequency | 50 HZ |

· 电压、频数可根据用户供电定制
Note: Working voltage and frequency can be customized according to customer requirements



SSE1400D-8/SPE680D-24

电动螺杆式空气压缩机 Electrical Screw Compressors

适用工况/ Working conditions

- 5寸/6寸潜孔锤 5"/6" Hammer
- 喷浆支护 Shotcrete
- 排渣吹孔 Cutting flushing & Hole blowing
- 选矿配套 Mineral processing

| | |
|-------------------------------|------------|
| 电机功率 Diesel tank volume | 200/185 kW |
| 电机防护等级 Motor protection class | IP54 |
| 电压 Voltage | 380 V |
| 频率 Frequency | 50 HZ |

· 电压、频数可根据用户供电定制
Note: Working voltage and frequency can be customized according to customer requirements



移动式螺杆空气压缩机 Portable Screw Compressors

| 主要技术规格 Main Specifications | SPE850D-18 | SPE810D-24 | SPE980D-18 | SPE950D-24 | SPE1115D-18 | SPE1090D-24 | SPE1290D-18 | SPE1255D-24 |
|-------------------------------|----------------------------|----------------------------|----------------------------|----------------------------|----------------------------|----------------------------|----------------------------|----------------------------|
| 电机功率/Diesel tank volume | 220 kW | 220 kW | 250 kW | 250 kW | 280 kW | 280 kW | 315 kW | 315 kW |
| 电机防护等级/Motor protection class | IP54 | IP54 | IP54 | IP54 | IP54 | IP54 | IP54 | IP54 |
| 额定排气量/Rated FAD | 27.5 m³/min | 26.5 m³/min | 31.3 m³/min | 27 m³/min | 31.5 m³/min | 30.8 m³/min | 36.5 m³/min | 35.5 m³/min |
| 额定压力/Nominal pressure, max | 18 bar | 24 bar | 18 bar | 24 bar | 18 bar | 24 bar | 18 bar | 24 bar |
| 机头/Air End | 二级压缩 Two-stage compression | 二级压缩 Two-stage compression | 二级压缩 Two-stage compression | 二级压缩 Two-stage compression | 二级压缩 Two-stage compression | 二级压缩 Two-stage compression | 二级压缩 Two-stage compression | 二级压缩 Two-stage compression |
| 形式/Type | 四轮 4 Wheel | 四轮 4 Wheel | 四轮 4 Wheel | 四轮 4 Wheel | 四轮 4 Wheel | 四轮 4 Wheel | 四轮 4 Wheel | 四轮 4 Wheel |
| 重量/Weight | 5,500kg | 5,000kg | 5,750kg | 5,750kg | 6,000kg | 6,000kg | 6,300kg | 6,300kg |
| 外形尺寸/Dimensions (LxWxH) | 4,180x2,080x2,500mm | 4,180x2,080x2,500mm | 4,180x2,080x2,500mm | 4,180x2,080x2,500mm | 4,180x2,080x2,500mm | 4,180x2,080x2,500mm | 4,180x2,080x2,500mm | 4,180x2,080x2,500mm |
| 出口管径/Air Discharge Valve Size | G2"和G1-1/2" | G2"和G1-1/2" | G2"和G1-1/2" | G2"和G1-1/2" | G2"和G1-1/2" | G2"和G1-1/2" | G2"和G1-1/2" | G2"和G1-1/2" |

裸机/固定式螺杆空气压缩机 Without frame or stationary, box type screw air compressor

| 主要技术规格 Main Specifications | SSE1600D-8 | SSE1765D-8 | SSE1940D-8 | SSE2155D-8 |
|-------------------------------|----------------------------|----------------------------|----------------------------|----------------------------|
| 电机功率/Diesel tank volume | 220kW | 250kW | 280kW | 315kW |
| 电机防护等级/Motor protection class | IP54 | IP54 | IP54 | IP54 |
| 额定排气量/Rated FAD | 45 m³/min | 50 m³/min | 55 m³/min | 61 m³/min |
| 额定压力/Nominal pressure, max | 8 bar | 8 bar | 8 bar | 8 bar |
| 机头/Air End | 二级压缩 Two-stage compression | 二级压缩 Two-stage compression | 二级压缩 Two-stage compression | 二级压缩 Two-stage compression |
| 形式/Type | 固定 Utilitytruck installed | 固定 Utilitytruck installed | 固定 Utilitytruck installed | 固定 Utilitytruck installed |
| 重量/Weight | 5,300kg | 6,000kg | 6,600kg | 6,800kg |
| 外形尺寸/Dimensions (LxWxH) | 3,100x1,860x2,260mm | 3,750x2,250x2,405mm | 3,750x2,250x2,405mm | 3,750x2,250x2,405mm |
| 出口管径/Air Discharge Valve Size | DN100 | DN100 | DN125 | DN125 |

· 型号带“V”为汇川变频机型，相同配置整机重量在工频整机基础上增加50kg
The models with V are variable frequency types of Inovance, with the whole weight of the same configuration increasing by 50kg based on that of power frequency types.

电动系列产品特点 5 / Electrical Screw Compressors Product Features 05

■ 产品采用减震垫措施，电机、压缩机传动部件所有减震点均在各部件重心附近，其余冷却器、风机、管路、罩壳等部件的布置均考虑固定及减震，运行时振幅低于同类产品要求30%；

■ Shock-absorbing design: all shock-absorbing points of motor and compressor transmission are near the center of gravity of each component, and the arrangement of other coolers, fans, pipelines, covers and other components are fixed and shock-absorbed, and the amplitude during operation is 30% lower than the requirements of products of the same level;



应用一 Application 1



应用二 Application 2



应用三 Application 3



应用四 Application 4

SSE1600D-8/SPE850D-18 电动螺杆式空气压缩机 Electrical Screw Compressors

适用工况/ Working conditions

- 6寸/7寸潜孔锤 6"/7" Hammer
- 排渣吹孔 Cutting flushing & Hole blowing
- 喷浆支护 Shotcrete
- 选矿配套 Mineral processing

| | |
|-------------------------------|--------|
| 电机功率 Diesel tank volume | 220 kW |
| 电机防护等级 Motor protection class | IP54 |
| 电压 Voltage | 380 V |
| 频率 Frequency | 50 HZ |

电压、频数可根据用户供电定制
Note: Working voltage and frequency can be customized according to customer requirements



SSE1765D-8/SPE950D-24 电动螺杆式空气压缩机 Electrical Screw Compressors

适用工况/ Working conditions

- 6寸/7寸潜孔锤 6"/7" Hammer
- 排渣吹孔 Cutting flushing & Hole blowing
- 喷浆支护 Shotcrete
- 选矿配套 Mineral processing

| | |
|-------------------------------|--------|
| 电机功率 Diesel tank volume | 250 kW |
| 电机防护等级 Motor protection class | IP54 |
| 电压 Voltage | 380 V |
| 频率 Frequency | 50 HZ |

电压、频数可根据用户供电定制
Note: Working voltage and frequency can be customized according to customer requirements



SSE1940D-8/SPE1090D-24 电动螺杆式空气压缩机 Electrical Screw Compressors

适用工况/ Working conditions

- 7寸/8寸潜孔锤 7"/8" Hammer
- 排渣吹孔 Cutting flushing & Hole blowing
- 喷浆支护 Shotcrete
- 选矿配套 Mineral processing

| | |
|-------------------------------|--------|
| 电机功率 Diesel tank volume | 280 kW |
| 电机防护等级 Motor protection class | IP54 |
| 电压 Voltage | 380 V |
| 频率 Frequency | 50 HZ |

电压、频数可根据用户供电定制
Note: Working voltage and frequency can be customized according to customer requirements



SSE2155D-8/SPE1255D-24 电动螺杆式空气压缩机 Electrical Screw Compressors

适用工况/ Working conditions

- 8寸/10寸潜孔锤 8"/10" Hammer
- 排渣吹孔 Cutting flushing & Hole blowing
- 喷浆支护 Shotcrete
- 选矿配套 Mineral processing

| | |
|-------------------------------|--------|
| 电机功率 Diesel tank volume | 315 kW |
| 电机防护等级 Motor protection class | IP54 |
| 电压 Voltage | 380 V |
| 频率 Frequency | 50 HZ |

电压、频数可根据用户供电定制
Note: Working voltage and frequency can be customized according to customer requirements



我们为客户持续供应可靠的零配件 同时也致力于为用户提供一流的售后服务

We continue to provide customers with reliable spare parts, we also committed to providing first-class after-sales service.

- 我们的售后服务团队和代理商保持长期稳定的紧密合作, 打造志高掘进全球服务支持体系, 保障客户在产能持续增长的同时, 降低维修及保养成本。
- Our after-sales service team and agents maintain long-term and stable close cooperation, creating a global service support system for Zhigao Tunnelling, ensuring that customers can continuously increase production capacity while reducing repair and maintenance costs.

备件手册 SPARE PARTS MANUAL

- 所有产品均提供符合国际要求和客户定制需求的备件手册, 以及不同阶段的保养维护清单, 以确保用户采购的设备稳定运行。
- All products are supplied with spare parts manuals that meet international standards and are tailored to customers, as well as maintenance kits at different stages to ensure the smooth and reliable operation of the equipment.

正品零件 GENUINE PARTS

- 志高公司客户应使用正宗厂家配件和各种油品以确保机器寿命和使用性能, 并保证机器长期平稳运转;
- Customers should always use authentic or factory approved parts and oils to ensure the life and performance, and the long lasting smooth running of the machine;



钻车服务工作站 SERVICE STATION

- 我们可为用户提供钻车服务工作站, 该服务站运输便捷、配套完善, 让用户享受“矿山及工程设备维护维修、应急配件储备”等一站式服务。
- We can provide users with mobile service workstations, which are convenient in transportation and complete in supporting facilities, allowing users to enjoy one-stop services such as "maintenance and repair of mining and construction equipment, emergency parts reserve".



服务 SERVICE

“不仅在深度, 更在维度!”

Not only in depth, but also in dimensions

服务协议 SERVICE AGREEMENT

志高掘进有不同的协议供客户选择:

- a) 年度服务协议(ASC)
志高的服务人员将按照服务计划, 定期拜访用户, 作检测和服务。
- b) 全程服务和保养协议(FMC)
志高的服务人员将按照固定的保养服务小时, 及时拜访用户, 作检测和服务。
- c) 现场服务合同(SSC)
志高的专业服务工程师将在现场长期跟踪服务, 客户还可以按照实际需求挑选服务方案和时间周期。

Different service plans for customers to choose from:

- a) Annual Service Agreement (ASC)
Zhigao service engineers will visit the users regularly for routine check and service according to the service plan.
- b) Full Service and Maintenance Agreement (FMC)
Zhigao service engineers will visit the users regularly for inspection and service according to the maintenance service hours.
- c) Site Service Contract (SSC)
Zhigao professional service engineers will provide service on site for a long period of time, and customers can also select service plans and time periods according to actual needs.

质保服务 QUALITY ASSURANCE SERVICES

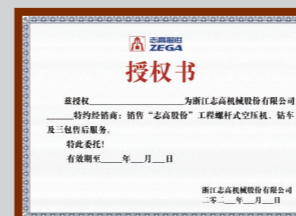
我们提供符合国际行业标准的质保服务;

同时, 我们正谋求开展高于行业标准的“质保期延长”计划: 树立行业标杆, 提升品牌实力!

We provide quality assurance services that meet international industry standards;
At the same time, we are seeking to carry out a "warranty period extension" plan that exceeds industry standards: establish industry benchmarks, and enhance brand strength!

品牌授权 licensing

我们给予具备客户服务能力且满足考核条件的代理商正式授权, 并颁发授权证书。
We grant authorization to eligible agents and issue corresponding authorization letters and certificates.



Parts Accessories & Services

配件与服务